

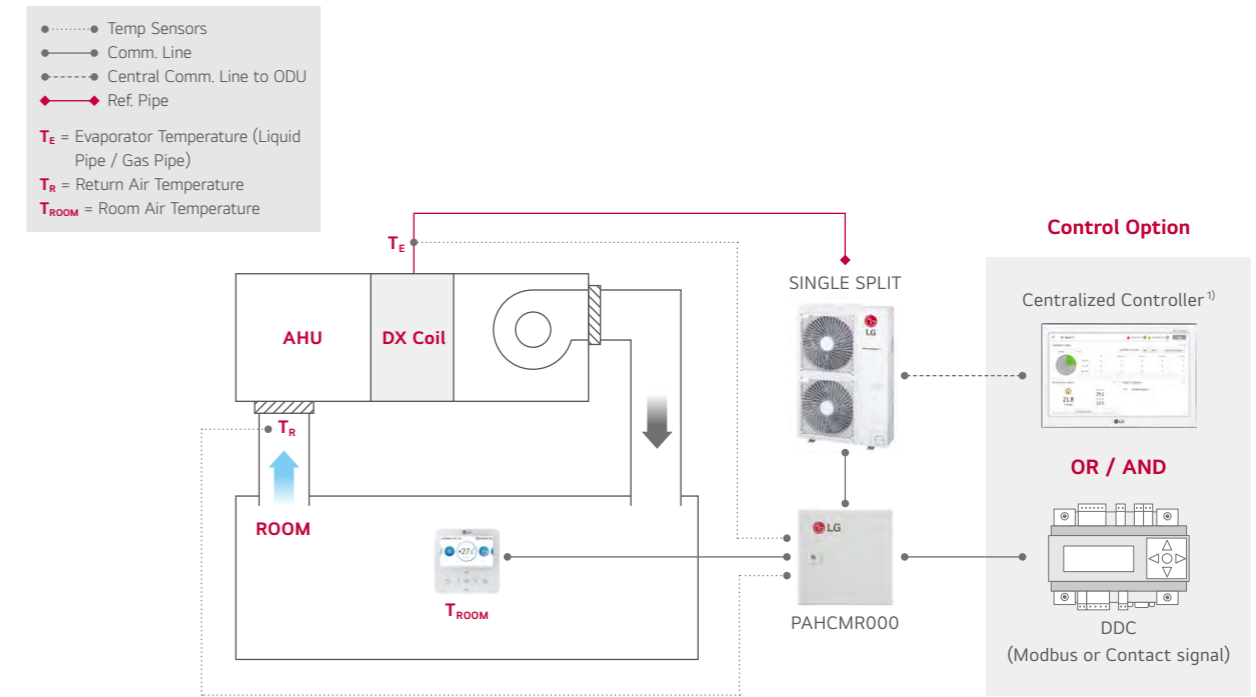
AHU SOLUTION



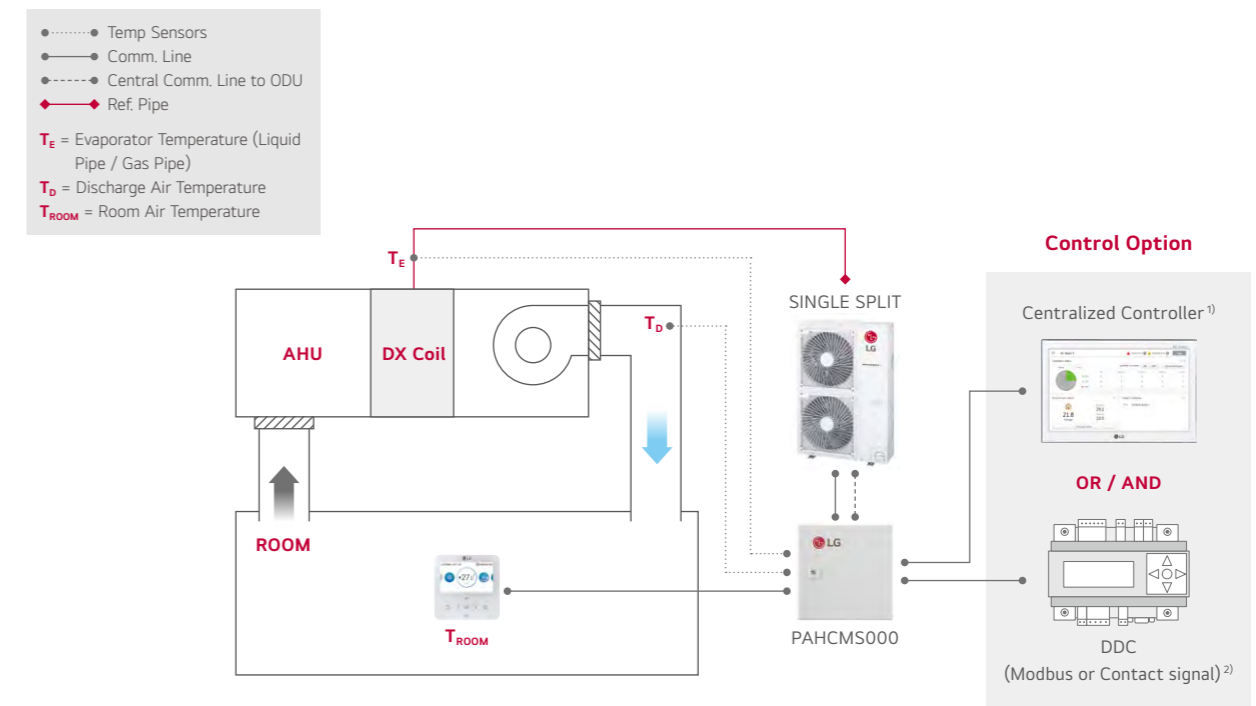
Air Handling Applications

Economically feasible solution for pair application with air handling units.

Return/Room Air Temperature Control



Discharge Air Temperature Control



1) PI485(PMNF14A1) is required for using centralized controller.

2) In case of applying DDC with contact signal, discharge air temperature should be measured and controlled by DDC.

3) For more detail, please refer to the PDB of AHU Communication Kit.

Communication Kit



PAHCMR000 / PAHCMS000

Specification

MODEL	COMBINATION		DESCRIPTION	DIMENSIONS (MM)		
	OUTDOOR UNIT	CENTRALIZED CONTROLLER		W	H	D
PAHCMR000	Single Split	•	Return / Room air temperature control by DDC or LG individual / centralized controller	300	300	155
PAHCMS000	Single Split	•	Discharge air temperature control by DDC or LG individual / centralized controller	380	300	155

Function list for Communication kit

FUNCTION LIST*	PAHCMR000	PAHCMS000	NOTE
Comm. Kit Operation	On / Off	On / Off	
Operation Mode ¹⁾	Cooling / Heating	Cooling / Heating	
Return (room) Air Temperature	16~30°C	-	
Discharge Air Temperature ²⁾	-	16~30°C	Available in case of using DDC with Modbus or LG Control system
Fan Speed ³⁾	Low / Middle / High	Low / Middle / High	It may not be possible depending on the particular condition
Forced Thermal On / Off	On / Off	-	Available in case of using DDC with contact signal
Capacity Control	-	•	Available in case of using DDC with Modbus or contact signal
Comm. Kit Operation	On / Off	On / Off	
Operation Mode ¹⁾	Cooling / Heating	Cooling / Heating	Available in case of using DDC with Modbus or LG Control system
Fan Speed	Low / Middle / High	Low / Middle / High	
Error Alarm	•	•	
Compressor On / Off	On / Off	On / Off	Available in case of using DDC with Modbus or LG individual controller PAHCMR000 doesn't provide this in case of using DDC with contact signal

1) Available operation mode can be varied depending on the setting of AHU Communication Kit.
 2) This range may differ depending on the type of controller.
 3) To control and monitor the fan speed, DO ports for the fan speed status have to be connected with the fan unit.
 * Some of functions may not be possible depending on the setting of AHU Communication Kit. For more details of condition, please refer to the product data book.

Combination Table

Model Name		R32				R410A	
		UUA1.U10	UUB1.U20	UUC1.U40	UUD1.U30 UUD3.U30	UU70W.U34	UU85W.U74
Capacity Index Range	kBtu/h	9 ~ 18	18 ~ 30	24 ~ 36	36 ~ 60	70	85
	kW	2.5 ~ 5.0	5.0 ~ 8.0	6.8 ~ 10.0	10.0 ~ 14.6	20.0	25.0
PAHCMR000		X	0	0	0	0	0
PAHCMS000		X	0	0	0	0	0

ACCESSORIES



UVnano™ Filter Box

UVnano Filter Box can effectively create a safe indoor environment by trapping and removing various harmful substances such as fine dust, bacteria and viruses in the form of droplets.



UVnano Filter Box Kit (Included ePM1 Filter)
PBM13M3UA0 / PBM13M2UA0 / PBM13M1UA0

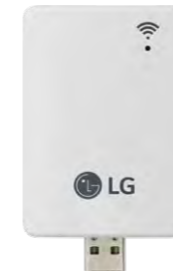
ePM1 Filter
FBM13M3UA0 / FBM13M2UA0 / FBM13M1UA0

PLATFORM	UNIT	M3 PLATFORM	M2 PLATFORM	M1 PLATFORM	
MODEL NAME		PBM13M3UA0	PBM13M2UA0	PBM13M1UA0	
Duct UVnano Filter Box	-				
Net Size (W x H x D)	mm	1,250 x 360 x 280	1,250 x 270 x 280	900 x 270 x 280	
Shipping Size (W x H x D)	mm	1,440 x 430 x 377	1,440 x 340 x 377	1,048 x 340 x 377	
Net Weight	kg	12.7	11.6	9.1	
Pre-Filter (1)	Size (W x H x D)	mm	596 x 377 x 4	596 x 247 x 4	596 x 247 x 4
	Mesh	-	34 x 39	34 x 39	34 x 39
	Color	-	Black	Black	Black
	Quantity	EA	2	2	1
Pre-Filter (2)	Size (W x H x D)	mm	-	-	247 x 247 x 4
	Mesh	-	-	-	34 x 39
	Color	-	-	-	Black
	Quantity	EA	-	-	1
UVnano	UVC Wavelength	nm	275	275	275
	UVC LED Quantity	EA	8	8	8
Filter (1)	Model Name		FBM13M3UA0	FBM13M2UA0	FBM13M1UA0
	Size (W x H x D)	mm	600 x 341 x 50.8	600 x 251 x 50.8	600 x 251 x 50.8
	Quantity	EA	2	2	1
	Grade	-	*ePM, 65%	ePM, 65%	ePM, 65%
Filter (2)	Size (W x H x D)	mm	-	-	250 x 251 x 50.8
	Quantity	EA	-	-	1
	Grade	-	-	-	ePM, 65%

* Grade : ISO 16890

LG Wi-Fi Modem

Control conditioners by using internet devices such as Android or iOS smartphones.



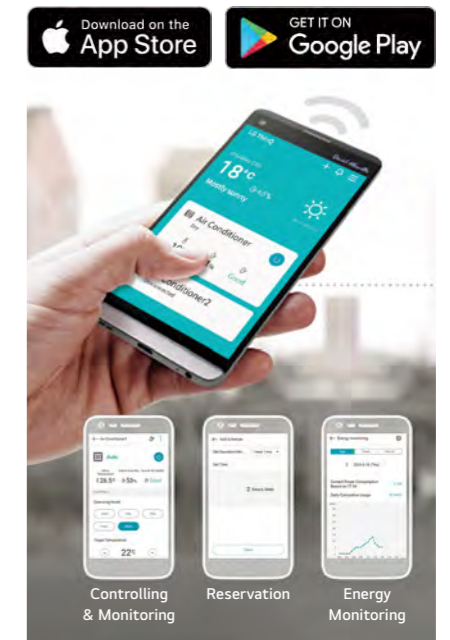
PWFMD200

Features

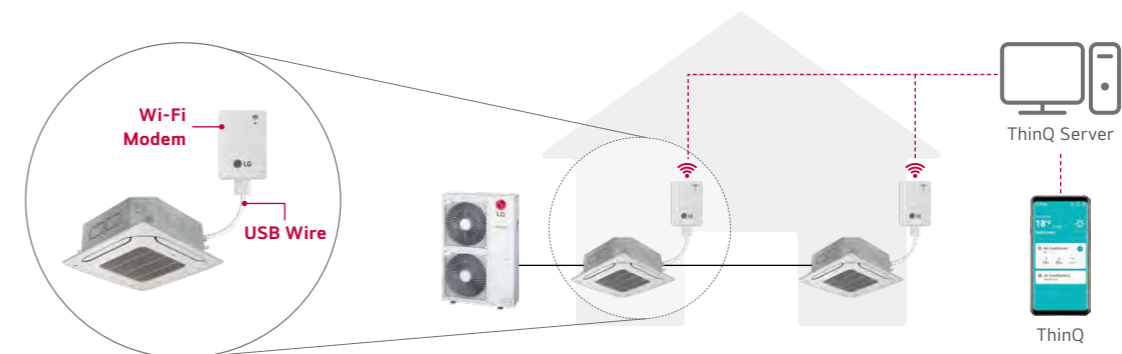
- A user can enjoy anytime, anywhere access with Wi-Fi equipped device through ThinQ mobile app.
- This allows the user to access the unit remotely to switch unit on or off before or after leaving the vicinity.
- LG's exclusive Home Appliances control app (ThinQ) is available.
- Simple operation for various functions.
 - On / Off
 - Operation Mode
 - Current / Set Temperature
 - Fan Speed
 - Vane Control¹⁾
 - Reservation (Sleep, Weekly On / Off)
 - Energy Monitoring²⁾
 - Filter Management
 - Error Check
 - Air Purify³⁾

Model Name	PWFMD200
Size (W x H x D, mm)	48 x 68 x 14
Interfaceable Products	System Air Conditioner ³⁾
Connection Type	Indoor unit 1:1
Communication Frequency	2.4 GHz
Wireless Standards	IEEE 802.11b/g/n
Mobile Application	ThinQ (Android v4.1(Jellybean) or higher, iPhone iOS 9.0 or higher)
Optional Extension Cable	PWYREW000 (10m extension)

- Note : 1. Functionality may be different according to each IDU model.
 2. User interface of application shall be revised for its design and contents improvement.
 3. Application is optimized for smartphone use, so it may not be well functioning with tablet devices.
- 1) Vane Control may not be possible according to the type of Indoor unit.
 2) LG Centralized controller and PDI installation is required for this function.
 3) For the compatibility with indoor units, regional LG office.



Overview



- ※ Search "ThinQ" on Google market or Appstore then download the app.
- ※ Internet service with Wi-Fi connection has to be available.
- ※ For our policy of continuous ThinQ App improvement, specification, design and features are subject to change without prior notice.

Standard Wired Remote Controller



Standard III
PREMTB101

Standard III
PREMTBB11



Standard II
PREMTB001

Standard II
PREMTBB01

Model Name	PREMTB101 PREMTBB11	PREMTB001 PREMTBB01
Operation Mode	On / Off, Fan Speed Control, Temperature Setting	
Mode Change	Cooling, Heating, Auto, Dehumidification, Fan	
Auto Swing / Vane Control	•	•
Reservation	Simple, Sleep, On / Off, Weekly, Holiday	
Time Display	•	•
Electrical Failure Compensation	•	•
Child Lock	•	•
Operation Status LED	•	•
Indoor Temperature Display	•	•
Wireless Remote Controller Receiver	-	•
Size (W x H x D, mm)	120 x 120 x 16	120 x 121 x 16
Backlight	•	•

※ Refer to each model PDB for applicable models.

Remote Controller

PI 485



PWLSSB21H



PMNFP14A1

Power : Single phase AC 220V 50/60Hz
 Max. no of the indoor units that can be connected : 64 Units
 Model applied : RAC / Multi / Single / THERMA V

※ Refer to each product PDB for applicable models.

Dry Contact



PDRYCB000

PDRYCB400



PDRYCB320

PDRYCB500 /
PDRYCB510*

※ Refer to each product PDB for applicable models.
 * No case for PDRYCB510

Model	PDRYCB000	PDRYCB400	PDRYCB320	PDRYCB500/ PDRYCB510*
Contact Point	1 Control Point	2 Control Point	8 Control Point	Modbus RTU
Power Input	AC 220V from outside power source	DC 5V & 12V from indoor unit PCB	DC 5V & 12V from indoor unit PCB	DC 5V & 12 V from indoor unit PDB
Voltage / Non Voltage Input	-	•	•	-
On / Off Control	•	•	•	•
Lock / Unlock	•	•	•	-
Fan Speed Setting	-	-	•	•
Thermo Off	-	•	•	-
Energy Saving	-	•	-	-
Temperature Setting	-	•	•	•
Error Monitoring	•	•	•	•
Operation Monitoring	•	•	•	•

Accessory Compatibility List (Indoor Unit)

Ceiling Mounted Cassette (Mini 4 Way)

Category	Product	Remarks	UT09FH.NQ0 UT12FH.NQ0 CT09F.NR0 CT12F.NR0 CT18F.NQ0	
Wireless Remote Controller	PQWRHQ0FDB	Heat Pump	0	
	PWLSSB21H	Heat Pump	0	
Wired Remote Controller	Simple	PQRCVCLOQ (W)	Simple	0
		PQRCHA0Q (W)	For Hotel	0
	Standard	PREMTB001	Standard II (White)	0
		PREMTBB01	Standard II (Black)	0
		PREMTB101	Standard III (White)	0
		PREMTBB11	Standard III (Black)	0
Premium	PREMTA000 (A/B)	Premium	0	
Dry Contact	Simple Contact	PDRYCB000	Simple Dry Contact	0
		PDRYCB400	2 Points Dry Contact (For Setback)	0
	Communication Type	PDRYCB300	For 3rd Party Thermostat	0
		PDRYCB320	For 3rd Party Thermostat (Analog Input)	0
		PDRYCB500	For Modbus	0
		PHNFP14A0	Without Case	X
Gateway	IDU PI485	With Case	X	
	PSNFP14A0	Without Case	X	
ETC	Remote Temperature Sensor	PQRSTA0	-	0
	Zone Controller	ABZCA	-	X
	CO ₂ Sensor	PES-CORV0	For ERV, ERV DX Indoor Units	X
	Group Control Wire	PZCWRCG3	0.25 m	0
	2-Remo Control Wire	PZCWRC2	0.25 m	0
	Extension Wire	PZCWRC1	10 m	0
	Wi-Fi Controller*	PWFMDD200	-	0
	Human Detecting Sensor	PTVSM A0	-	X
	Drain Pump	ABDPG	-	X
	Ionizer	PAS-NATDR2	-	0

Note

- 0 : Possible, X : Impossible, - : Not applicable, Embedded : Included with product.
- * : Some advanced functions controlled by individual controller cannot be operated.
- ** : It could not be operated some functions.
- *** : Selecting a wireless remote controller in case of ducted type indoor units requires either a connection to the wired remote controller (Standard II) or an IR receiver accessory to be connected to the duct in order to receive the signal.
- If you need more detail, please refer to the BECON PDB or the manual of product. (<http://partner.lge.com/global> : Home > Doc.Library > Product > Control(BECON))
- For our policy of continuous product improvement, specification, design, model name and feature are subject to change without prior notice.

Accessory Compatibility List (Indoor Unit)

Ceiling Mounted Cassette (4 Way)

Category	Product	Remarks	UT18FH.NB0 UT24FH.NA0 UT30FH.NA0 UT36FH.NA0 UT42FH.NA0 UT48FH.NA0 UT60FH.NA0 CT24F.NB0 UT30F.NB0 UT36F.NA0 UT42F.NA0 UT48F.NA0 UT60F.NA0	
Wireless Remote Controller	PQWRHQ0FDB	Heat Pump	O	
	PWLSSB21H	Heat Pump	O	
Wired Remote Controller	Simple	PQRCVCL0Q (W)	Simple	O
		PQRCHCA0Q (W)	For Hotel	O
	Standard	PREMTB001	Standard II (White)	O
		PREMTB01	Standard II (Black)	O
		PREMTB101	Standard III (White)	O
	PREMTB11	Standard III (Black)	O	
	Premium	PREMTA000 (A/B)	Premium	O
Dry Contact	Simple Contact	PDRYCB000	Simple Dry Contact	O
		PDRYCB400	2 Points Dry Contact (For Setback)	O
	Communication Type	PDRYCB300	For 3rd Party Thermostat	O
		PDRYCB320	For 3rd Party Thermostat (Analog Input)	O
		PDRYCB500	For Modbus	O
Gateway	IDU Pi485	PHNFP14A0	Without Case	X
		PSNFP14A0	With Case	X
ETC	Remote Temperature Sensor	PQRSTA0	-	O
	Zone Controller	ABZCA	-	X
	CO ₂ Sensor	PES-CORV0	For ERV, ERV DX Indoor Units	X
	Group Control Wire	PZCWRCG3	0.25 m	O
	2-Remo Control Wire	PZCWRC2	0.25 m	O
	Extension Wire	PZCWRC1	10 m	O
	Wi-Fi Controller*	PWFMD200	-	O
	Human Detecting Sensor	ABDPG	-	X
	Drain Pump	PTAHYPO	-	O
	Ionizer	PAS-NATDR2	-	O

Note

- O : Possible, X : Impossible, - : Not applicable, Embedded : Included with product.
- * : Some advanced functions controlled by individual controller cannot be operated.
- ** : It could not be operated some functions.
- *** : Selecting a wireless remote controller in case of ducted type indoor units requires either a connection to the wired remote controller (Standard II) or an IR receiver accessory to be connected to the duct in order to receive the signal.
- If you need more detail, please refer to the BECON PDB or the manual of product. ([http://partner.lge.com/global : Home > Doc.Library > Product > Control\(BECON\)](http://partner.lge.com/global : Home > Doc.Library > Product > Control(BECON))))
- For our policy of continuous product improvement, specification, design, model name and feature are subject to change without prior notice.

Ceiling Concealed Duct (Mid Static)

Category	Product	Remarks	UM12FH.N10 UM18FH.N10 UM24FH.N20 UM30FH.N20 UM36FH.N30 UM42FH.N30 UM48FH.N30 CM18F.N10 CM24F.N10 UM30F.N10 UM36F.N20 UM42F.N20 UM48F.N30 UM60F.N30	
Wireless Remote Controller	PQWRHQ0FDB	Heat Pump	O***	
	PWLSSB21H	Heat Pump	O***	
Wired Remote Controller	Simple	PQRCVCL0Q (W)	Simple	O
		PQRCHCA0Q (W)	For Hotel	O
	Standard	PREMTB001	Standard II (White)	O
		PREMTB01	Standard II (Black)	O
		PREMTB101	Standard III (White)	O
	PREMTB11	Standard III (Black)	O	
	Premium	PREMTA000 (A/B)	Premium	O
IR Receiver	Simple Contact	PWLRVN000	-	O
		PDRYCB000	Simple Dry Contact	O
	Communication Type	PDRYCB400	2 Points Dry Contact (For Setback)	O
		PDRYCB300	For 3rd Party Thermostat	O
		PDRYCB320	For 3rd Party Thermostat (Analog Input)	O
PDRYCB500	For Modbus	O		
Gateway	IDU Pi485	PHNFP14A0	Without case	X
		PSNFP14A0	With case	X
ETC	Remote Temperature Sensor	PQRSTA0	-	O
	Zone Controller	ABZCA	-	O
	CO ₂ Sensor	PES-CORV0	For ERV, ERV DX Indoor Units	X
	Group Control Wire	PZCWRCG3	0.25 m	O
	2-Remo Control Wire	PZCWRC2	0.25 m	O
	Extension Wire	PZCWRC1	10 m	O
	Wi-Fi Controller*	PWFMD200	-	O
	Human Detecting Sensor	PTVSM0	-	X
	Drain Pump	ABDPG	-	O (Embedded)
	UVnano Filter Box Kit	PBM13M1UA0	For M1 Chassis	O
PBM13M2UA0		For M2 Chassis	O	
PBM13M3UA0		For M3 Chassis	O	
High Efficiency Filter (Main Filter of Filter Box)	FBM13M1UA0	For M1 UVnano Filter Box	O	
	FBM13M2UA0	For M2 UVnano Filter Box	O	
	FBM13U3UA0	For M3 UVnano Filter Box	O	

Note

- O : Possible, X : Impossible, - : Not applicable, Embedded : Included with product.
- * : Some advanced functions controlled by individual controller cannot be operated.
- ** : It could not be operated some functions.
- *** : Selecting a wireless remote controller in case of ducted type indoor units requires either a connection to the wired remote controller (Standard II) or an IR receiver accessory to be connected to the duct in order to receive the signal.
- If you need more detail, please refer to the BECON PDB or the manual of product. ([http://partner.lge.com/global : Home > Doc.Library > Product > Control\(BECON\)](http://partner.lge.com/global : Home > Doc.Library > Product > Control(BECON))))
- Do not install both the IR Receiver and Wired Remote Controller. This may cause malfunctions.
- For our policy of continuous product improvement, specification, design, model name and feature are subject to change without prior notice.

Accessory Compatibility List (Indoor Unit)

Ceiling Concealed Duct (Low Static)

Category	Product	Remarks	UL12FH.N50 UL18FH.N30 CL09F.N50 CL12F.N50 CL18F.N60 CL24F.N30	
Wireless Remote Controller	PQWRHQ0FDB	Heat Pump	O***	
	PWLSSB21H	Heat Pump	O***	
Wired Remote Controller	Simple	PQRCVCL0Q (W)	Simple	O
		PQRCHCA0Q (W)	For Hotel	O
	Standard	PREMTB001	Standard II (White)	O
		PREMTBB01	Standard II (Black)	O
		PREMTB101	Standard III (White)	O
		PREMTBB11	Standard III (Black)	O
Premium	PREMTA000(A/B)	Premium	O	
IR Receiver	PWLRVN000	-	O	
Dry Contact	Simple Contact	PDRYCB000	Simple Dry Contact	O
		PDRYCB400	2 Points Dry Contact (For Setback)	O
	Communication Type	PDRYCB300	For 3rd Party Thermostat	O
		PDRYCB320	For 3rd Party Thermostat (Analog Input)	O
		PDRYCB500	For Modbus	O
Gateway	IDU PI485	PHNFP14A0	Without Case	X
		PSNFP14A0	With Case	X
ETC	Remote Temperature Sensor	PQRSTA0	-	O
	Zone Controller	ABZCA	-	O
	CO ₂ Sensor	PES-CORV0	For ERV, ERV DX Indoor Units	X
	Group Control Wire	PZCWRCG3	0.25 m	O
	2-Remo Control Wire	PZCWRC2	0.25 m	O
	Extension Wire	PZCWRC1	10 m	O
	Wi-Fi Controller*	PWFMDD200	-	O
	Human Detecting Sensor	PTVSMA0	-	X
	Drain Pump	ABDPG	-	O (Embedded)

Note

- O : Possible, X : Impossible, - : Not applicable, Embedded : Included with product.
- * : Some advanced functions controlled by individual controller cannot be operated.
- ** : It could not be operated some functions.
- *** : Selecting a wireless remote controller in case of ducted type indoor units requires either a connection to the wired remote controller (Standard II) or an IR receiver accessory to be connected to the duct in order to receive the signal.
- If you need more detail, please refer to the BECON PDB or the manual of product. ([http://partner.lge.com/global : Home > Doc.Library > Product > Control\(BECON\)](http://partner.lge.com/global : Home > Doc.Library > Product > Control(BECON))))
- Do not install both the IR Receiver and Wired Remote Controller. This may cause malfunctions.
- For our policy of continuous product improvement, specification, design, model name and feature are subject to change without prior notice.

Ceiling Suspended

Category	Product	Remarks	UV18FH.N10 UV24FH.N20 UV30FH.N20 UV36FH.N20 UV42FH.N20	
Wireless Remote Controller	PQWRHQ0FDB	Heat Pump	O	
	PWLSSB21H	Heat Pump	O	
Wired Remote Controller	Simple	PQRCVCL0Q (W)	Simple	X
		PQRCHCA0Q (W)	For Hotel	X
	Standard	PREMTB001	Standard II (White)	O
		PREMTBB01	Standard II (Black)	O
		PREMTB101	Standard III (White)	O
		PREMTBB11	Standard III (Black)	O
Premium	PREMTA000 (A/B)	Premium	O	
Dry Contact	Simple Contact	PDRYCB000	Simple Dry Contact	O
		PDRYCB400	2 Points Dry Contact (For Setback)	O
	Communication Type	PDRYCB300	For 3rd Party Thermostat	O
		PDRYCB320	For 3rd Party Thermostat (Analog Input)	O
		PDRYCB500	For Modbus	O
Gateway	IDU PI485	PHNFP14A0	Without Case	X
		PSNFP14A0	With Case	X
ETC	Remote Temperature Sensor	PQRSTA0	-	O
	Zone Controller	ABZCA	-	X
	CO ₂ Sensor	PES-CORV0	For ERV, ERV DX Indoor Units	X
	Group Control Wire	PZCWRCG3	0.25 m	O
	2-Remo Control Wire	PZCWRC2	0.25 m	O
	Extension Wire	PZCWRC1	10 m	O
	Wi-Fi Controller*	PWFMDD200	-	O
	Human Detecting Sensor	PTVSMA0	-	X
Drain Pump	ABDPG	-	X	

Note

- O : Possible, X : Impossible, - : Not applicable, Embedded : Included with product.
- * : Some advanced functions controlled by individual controller cannot be operated.
- ** : It could not be operated some functions.
- *** : Selecting a wireless remote controller in case of ducted type indoor units requires either a connection to the wired remote controller (Standard II) or an IR receiver accessory to be connected to the duct in order to receive the signal.
- If you need more detail, please refer to the BECON PDB or the manual of product. ([http://partner.lge.com/global : Home > Doc.Library > Product > Control\(BECON\)](http://partner.lge.com/global : Home > Doc.Library > Product > Control(BECON))))
- For our policy of continuous product improvement, specification, design, model name and feature are subject to change without prior notice.

Accessory Compatibility List (Indoor Unit)

Wall Mounted Unit

Category	Product	Remarks	MJ09PC.NSJ MJ12PC.NSJ MJ18PC.NSK MJ24PC.NSK US30F.NR0 US36F.NR0	
Wireless Remote Controller	PQWRHQ0FDB	Heat Pump	O (Embedded)	
	PWLSSB21H	Heat Pump	O	
Wired Remote Controller	Simple	PQRCVCL0Q (W)	Simple	O
		PQRCHCA0Q (W)	For Hotel	O
	Standard	PREMTB001	Standard II (White)	O
		PREMTBB01	Standard II (Black)	O
		PREMTB101	Standard III (White)	O
		PREMTBB11	Standard III (Black)	O
Premium	PREMTA000 (A/B)	Premium	X	
Dry Contact	Simple Contact	PDRYCB000	Simple Dry Contact	O
		PDRYCB400	2 Points Dry Contact (For Setback)	O
	Communication Type	PDRYCB300	For 3rd Party Thermostat	O
		PDRYCB320	For 3rd Party Thermostat (Analog Input)	O
		PDRYCB500	For Modbus	O
Gateway	IDU PI485	PHNFP14A0	Without Case	X
		PSNFP14A0	With Case	X
ETC	Remote Temperature Sensor	PQRSTA0	-	X
	Zone Controller	ABZCA	-	X
	CO ₂ Sensor	PES-C0RV0	For ERV, ERV DX Indoor Units	X
	Group Control Wire	PZCWRCG3	0.25 m	X
	2-Remo Control Wire	PZCWRC2	0.25 m	X
	Extension Wire	PZCWRC1	10 m	O
	Wi-Fi Controller*	PWFMD200	-	O (Embedded)
	Human Detecting Sensor	PTVSAA0	-	X

Note

1. O : Possible, X : Impossible, - : Not applicable, Embedded : Included with product.
2. * : Some advanced functions controlled by individual controller cannot be operated.
3. If there is a difference in development time between the product and the remote controller, some functions cannot be operated.
4. Selecting a wireless remote controller in case of ducted type indoor units requires either a connection to the wired remote controller (Standard II) or an IR receiver accessory to be connected to the duct in order to receive the signal.
5. If you need more detail, please refer to the BECON PDB or the manual of product. ([http://partner.lge.com/global:Home>Doc.Library>Product>Control\(BECON\)](http://partner.lge.com/global:Home>Doc.Library>Product>Control(BECON))))
6. For our policy of continuous product improvement, specification, design, model name and feature are subject to change without prior notice.

Ceiling Mounted Cassette (Round)

Category	Product	Remarks	UT36F.NY0 UT48F.NY0	
Wireless Remote Controller	PQWRHQ0FDB	Heat Pump	O	
	PWLSSB21H	Heat Pump	O	
Wired Remote Controller	Simple	PQRCVCL0Q (W)	Simple	O
		PQRCHCA0Q (W)	For Hotel	O
	Standard	PREMTB001	Standard II (White)	O
		PREMTBB01	Standard II (Black)	O
		PREMTB101	Standard III (White)	O
		PREMTBB11	Standard III (Black)	O
Premium	PREMTA000 (A/B)	Premium	O	
Dry Contact	Simple Contact	PDRYCB000	Simple Dry Contact	O
		PDRYCB400	2 Points Dry Contact (For Setback)	O
	Communication Type	PDRYCB300	For 3rd Party Thermostat	O
		PDRYCB320	For 3rd Party Thermostat (Analog Input)	O
		PDRYCB500	For Modbus	O
Gateway	IDU PI485	PHNFP14A0	Without Case	X
		PSNFP14A0	With Case	X
ETC	Remote Temperature Sensor	PQRSTA0	-	O
	Zone Controller	ABZCA	-	X
	CO ₂ Sensor	PES-C0RV0	For ERV, ERV DX Indoor Units	X
	Group Control Wire	PZCWRCG3	0.25 m	O
	2-Remo Control Wire	PZCWRC2	0.25 m	X
	Extension Wire	PZCWRC1	10 m	O
	Wi-Fi Controller*	PWFMD200	-	O
Air Purification Kit	PTAHYP0	-	O	

Note

1. O : Possible, X : Impossible, - : Not applicable, Embedded : Included with product.
2. * : Some advanced functions controlled by individual controller cannot be operated.
3. If there is a difference in development time between the product and the remote controller, some functions cannot be operated.
4. Selecting a wireless remote controller in case of ducted type indoor units requires either a connection to the wired remote controller (Standard II) or an IR receiver accessory to be connected to the duct in order to receive the signal.
5. If you need more detail, please refer to the BECON PDB or the manual of product. ([http://partner.lge.com/global:Home>Doc.Library>Product>Control\(BECON\)](http://partner.lge.com/global:Home>Doc.Library>Product>Control(BECON))))
6. For our policy of continuous product improvement, specification, design, model name and feature are subject to change without prior notice.

Accessory Compatibility List (Indoor Unit)

Ceiling Suspended

Category	Product	Remarks	UV18F.N10 UV24F.N10 UV30F.N10 UV36F.N20 UV42F.N20 UV48F.N20 UV60F.N20	
Wireless Remote Controller	PQWRHQ0FDB	Heat Pump	O (Embedded)	
	PWLSSB21H	Heat Pump	O	
Wired Remote Controller	Simple	PQRCVCL0Q (W)	Simple	X
		PQRCHCA0Q (W)	For Hotel	X
	Standard	PREMTB001	Standard II (White)	O
		PREMTBB01	Standard II (Black)	O
		PREMTB101	Standard III (White)	O
		PREMTBB11	Standard III (Black)	O
Premium	PREMTA000 (A/B)	Premium	O	
Dry Contact	Simple Contact	PDRYCB000	Simple Dry Contact	O
		PDRYCB400	2 Points Dry Contact (For Setback)	O
	Communication Type	PDRYCB300	For 3rd Party Thermostat	O
		PDRYCB320	For 3rd Party Thermostat (Analog Input)	O
		PDRYCB500	For Modbus	O
Gateway	IDU PI485	PHNFP14A0	Without Case	X
		PSNFP14A0	With Case	X
ETC	Remote Temperature Sensor	PQRSTA0	-	O
	Zone Controller	ABZCA	-	X
	CO ₂ Sensor	PES-C0RV0	For ERV, ERV DX Indoor Units	X
	Group Control wire	PZCWRCG3	0.25 m	O
	2-Remo Control Wire	PZCWRC2	0.25 m	O
	Extension Wire	PZCWRC1	10 m	O
	Wi-Fi Controller*	PWFMDD200	-	O
	Human Detecting Sensor	PTVSA00	-	X
	Drain Pump	ABDPG	-	X

Note

1. O : Possible, X : Impossible, - : Not applicable, Embedded : Included with product.
2. * : Some advanced functions controlled by individual controller cannot be operated.
3. If there is a difference in development time between the product and the remote controller, some functions cannot be operated.
4. Selecting a wireless remote controller in case of ducted type indoor units requires either a connection to the wired remote controller (Standard II) or an IR receiver accessory to be connected to the duct in order to receive the signal.
5. If you need more detail, please refer to the BECON PDB or the manual of product. (<http://partner.lge.com/global> : Home > Doc.Library > Product > Control(BECON))
6. For our policy of continuous product improvement, specification, design, model name and feature are subject to change without prior notice.

Console

Category	Product	Remarks	UQ09F.NA0 UQ12F.NA0 UQ18F.NA0	
Wireless Remote Controller	PQWRHQ0FDB	Heat Pump	O (Embedded)	
	PWLSSB21H	Heat Pump	O	
Wired Remote Controller	Simple	PQRCVCL0Q (W)	Simple	O
		PQRCHCA0Q (W)	For Hotel	O
	Standard	PREMTB001	Standard II (White)	O
		PREMTBB01	Standard II (Black)	O
		PREMTB101	Standard III (White)	O
		PREMTBB11	Standard III (Black)	O
Premium	PREMTA000 (A/B)	Premium	O	
Dry Contact	Simple Contact	PDRYCB000	Simple Dry Contact	O
		PDRYCB400	2 Points Dry Contact (For Setback)	O
	Communication Type	PDRYCB300	For 3rd Party Thermostat	O
		PDRYCB320	For 3rd Party Thermostat (Analog Input)	O
Gateway	IDU PI485	PHNFP14A0	Without Case	X
		PSNFP14A0	With Case	X
ETC	Remote Temperature Sensor	PQRSTA0	-	O
	Zone Controller	ABZCA	-	X
	CO ₂ Sensor	PES-C0RV0	For ERV, ERV DX Indoor Units	X
	Group Control Wire	PZCWRCG3	0.25 m	O
	2-Remo Control Wire	PZCWRC2	0.25 m	O
	Extension Wire	PZCWRC1	10 m	O
	Wi-Fi Controller*	PWFMDD200	-	O
Human Detecting Sensor	PTVSA00	-	X	

Note

1. O : Possible, X : Impossible, - : Not applicable, Embedded : Included with product.
2. * : Some advanced functions controlled by individual controller cannot be operated.
3. If there is a difference in development time between the product and the remote controller, some functions cannot be operated.
4. Selecting a wireless remote controller in case of ducted type indoor units requires either a connection to the wired remote controller (Standard II) or an IR receiver accessory to be connected to the duct in order to receive the signal.
5. If you need more detail, please refer to the BECON PDB or the manual of product. (<http://partner.lge.com/global> : Home > Doc.Library > Product > Control(BECON))
6. For our policy of continuous product improvement, specification, design, model name and feature are subject to change without prior notice.

Accessory Compatibility List (Outdoor Unit)

Outdoor Units

Category	Product	Remarks	UUA1.U10	UUB1.U20 UUC1.U40 UUD1.U30 UUD3.U30	
Central Controller	Simple	PQCSZ250S0	AC EZ	0	
	AC Ez Touch	PACEZA000	AC Ez Touch	0	
	AC Smart	PACS5A000	AC Smart 5	0	
	ACP	PACP5A000	ACP 5	0	
	AC Manager ¹⁾	PACM5A000	AC Manager 5	0	
	ODU PI485	PMNFP14A1	PI 485 Gateway	0	0
Simple	Low Ambient Kit	PRVC2	From MULTI V IV series	-	-
	AHU Comm. Kit	PAHCMR000	Return Air Temperature Control	X	0
		PAHCMS000	Discharge Air Temperature Control	X	0
	BACnet	PQNFB17C0	ACP BACnet	0	0
	Lonworks	PLNWKB000	ACP Lonworks	0	0
	ETC	PDI	PPWRDB000	PDI Standard	0
PQNUD1S40			PDI Premium	0	0
ACS IO Module		PEXPMB000	-	X	X

Note

1. 0 : Possible, X : Impossible, - : Not applicable
2. * : Some advanced functions controlled by individual controller cannot be operated.
3. 1) : ACP or AC Smart is needed.
4. Compatibility of individual controller(wireless/wired remote controller) could be found with function list on Indoor Unit's PDB.
5. If you need more detail, please refer to the BECON PDB or the manual of product.
([http://partner.lge.com/global : Home > Doc.Library > Product > Control\(BECON\)](http://partner.lge.com/global : Home > Doc.Library > Product > Control(BECON))))
6. For our policy of continuous product improvement, specification, design, model name and feature are subject to change without prior notice.

Outdoor Units - Synchro

Category	Product	Remarks	UUD1.U30 UUD3.U30	
Central Controller	Simple	PQCSZ250S0	AC EZ	0
	AC Ez Touch	PACEZA000	AC Ez Touch	0
	AC Smart	PACS5A000	AC Smart 5	X
	ACP	PACP5A000	ACP 5	X
	AC Manager ²⁾	PACM5A000	AC Manager 5	X
	Simple	ODU PI485	PMNFP14A1	PI 485 Gateway
Low Ambient Kit		PRVC2	From MULTI V IV series	X
AHU Comm. Kit		PAHCMR000	Return / Room Air Control	X
		PAHCMS000	Supply Air Control by DDC	X
BACnet		PQNFB17C0	ACP BACnet	X
Lonworks		PLNWKB000	ACP Lonworks	X
ETC	PDI	PPWRDB000	PDI Standard	X
		PQNUD1S40	PDI Premium	X
	ACS IO Module	PEXPMB000	-	X

Note

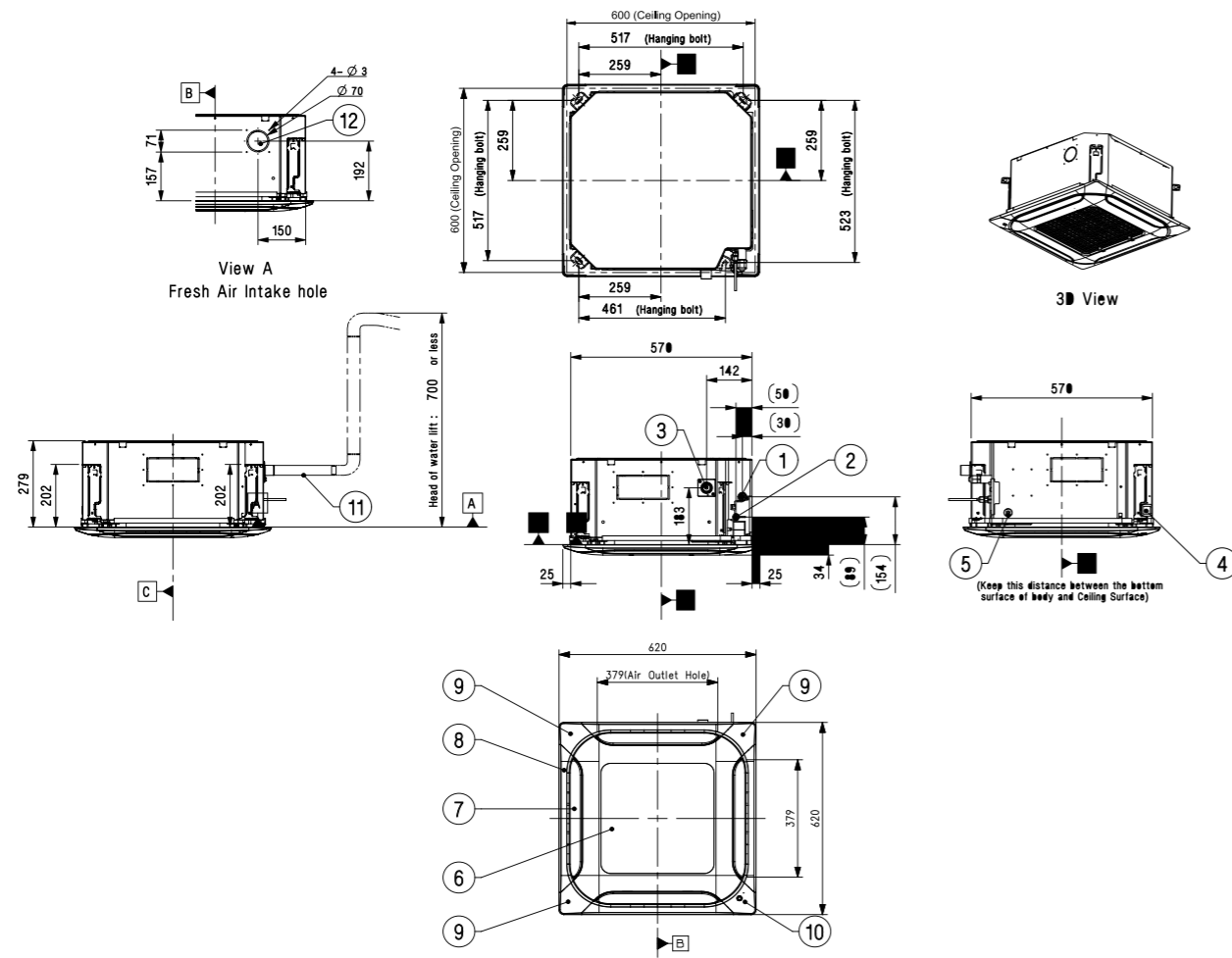
1. 0 : Possible, X : Impossible, - : Not applicable
2. * : Some advanced functions controlled by individual controller cannot be operated.
3. 2) : ACP or AC Smart is needed.
4. Compatibility of individual controller(wireless/wired remote controller) could be found with function list on Indoor Unit's PDB.
5. If you need more detail, please refer to the BECON PDB or the manual of product.
([http://partner.lge.com/global : Home > Doc.Library > Product > Control\(BECON\)](http://partner.lge.com/global : Home > Doc.Library > Product > Control(BECON))))
6. For our policy of continuous product improvement, specification, design, model name and feature are subject to change without prior notice.

H-INVERTER (R32)

UT09FH.NQ0 / UT12FH.NQ0

(Unit : mm)

PART NAME
1 Gas Pipe Connection
2 Liquid Pipe Connection
3 Drain Pipe Connection
4 Power and Communication Cable Routing Hole
5 Wired Remote Controller Wire Routing Hole
6 Air Inlet
7 Air Outlet
8 Decoration Panel (Accessory)
9 Decoration Corner Cover
10 Decoration Corner Display Cover
11 Flexible Drain Hose
12 Fresh air Intake Hole

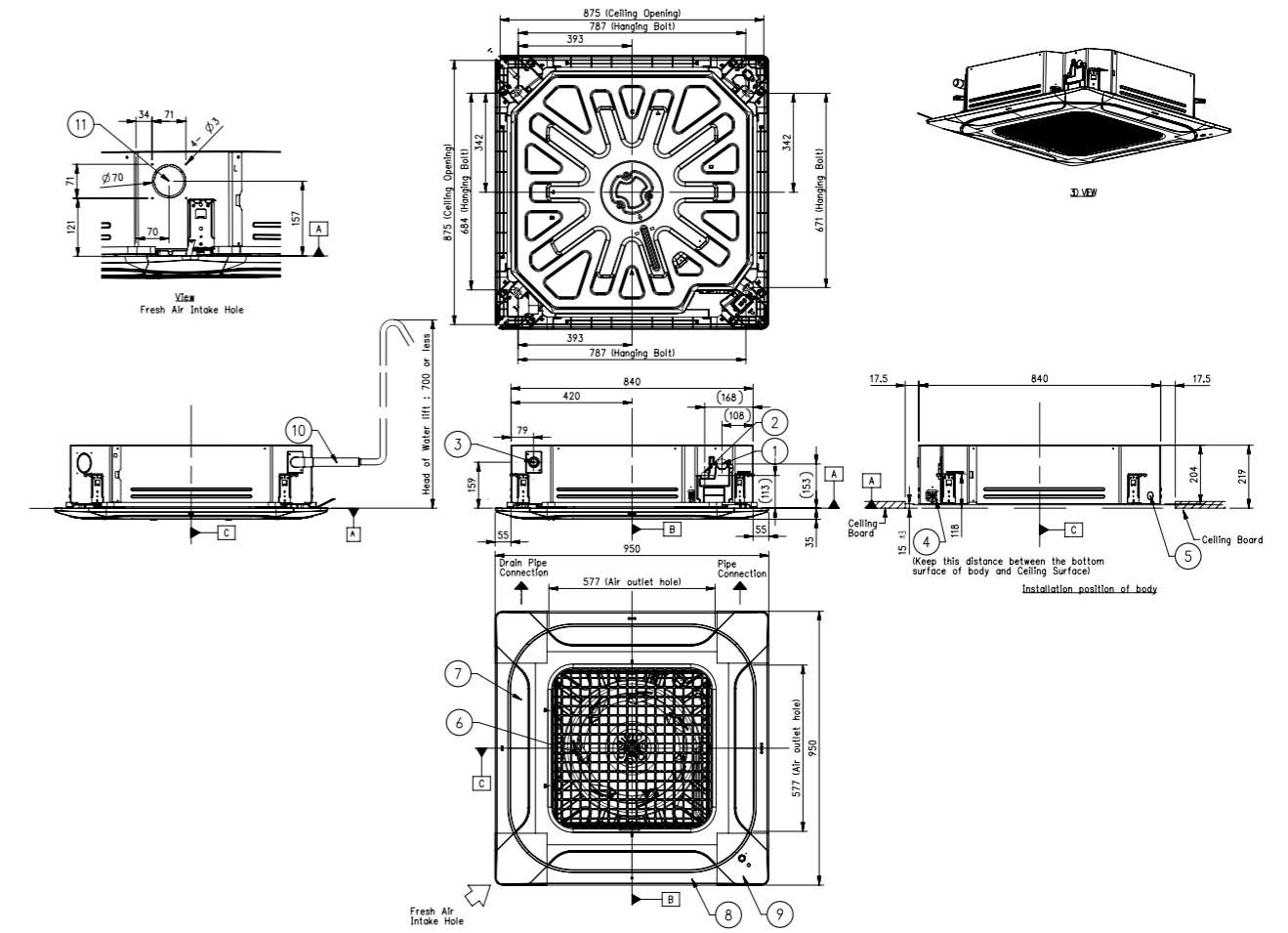


H-INVERTER (R32)

UT18FH.NB0

(Unit : mm)

PART NAME
1 Gas Pipe Connection
2 Liquid Pipe Connection
3 Drain Pipe Connection
4 Power and Communication Cable Routing Hole
5 Wired Remote Controller Wire Routing Hole
6 Air Inlet
7 Air Outlet
8 Decoration Panel (Accessory)
9 Decoration Corner Cover
10 Decoration Corner Display Cover
11 Flexible Drain Hose

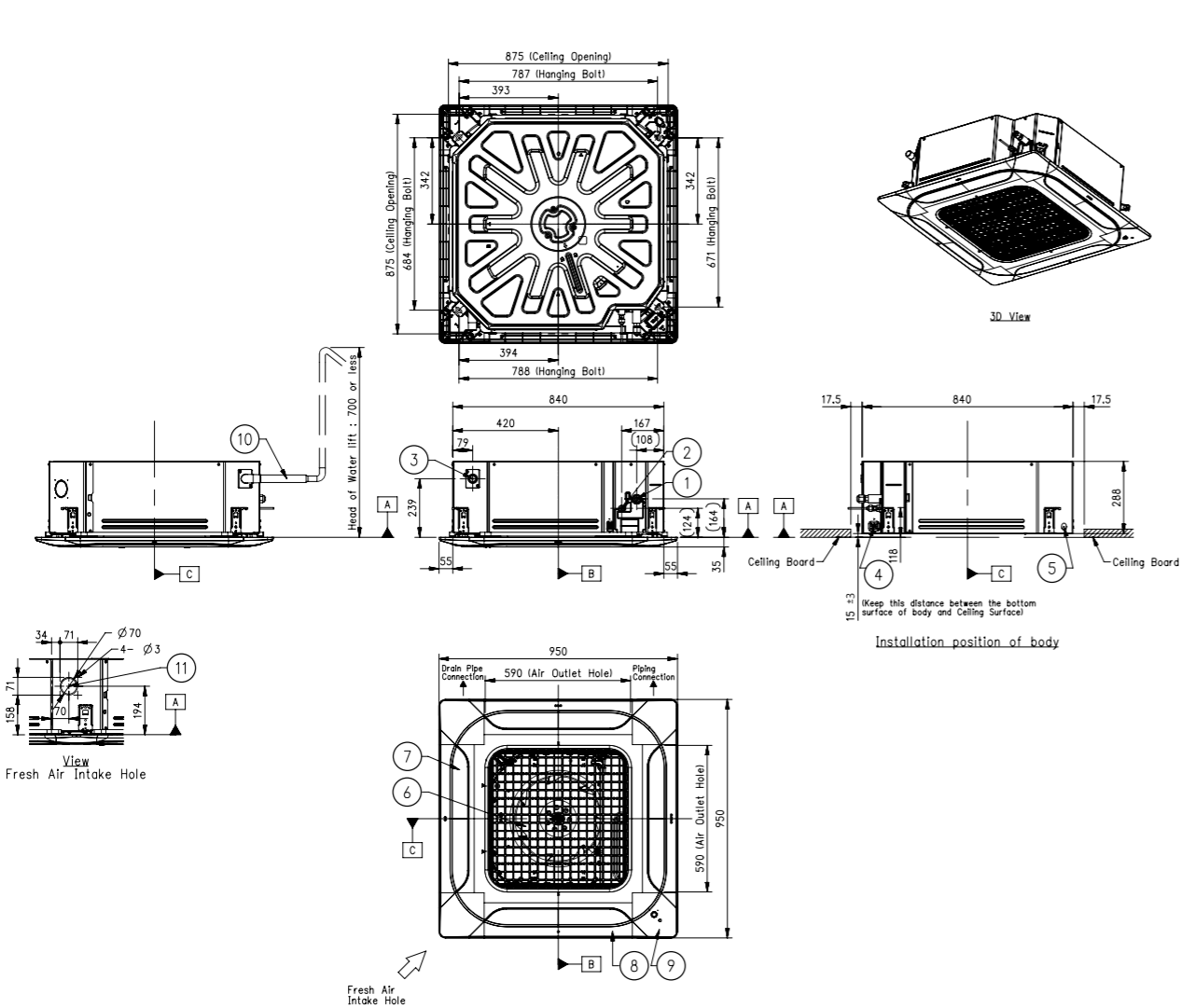


H-INVERTER (R32)

UT24FH.NA0 / UT30FH.NA0 / UT36FH.NA0 / UT42FH.NA0
 UT48FH.NA0 / UT60FH.NA0

(Unit : mm)

	PART NAME
1	Gas Pipe Connection
2	Liquid Pipe Connection
3	Drain Pipe Connection
4	Power and Communication Cable Routing Hole
5	Wired Remote Controller Wire Routing Hole
6	Air Inlet
7	Air Outlet
8	Decoration Panel (Accessory)
9	Decoration Corner Cover
10	Flexible Drain Hose
11	Fresh Air Intake Hole

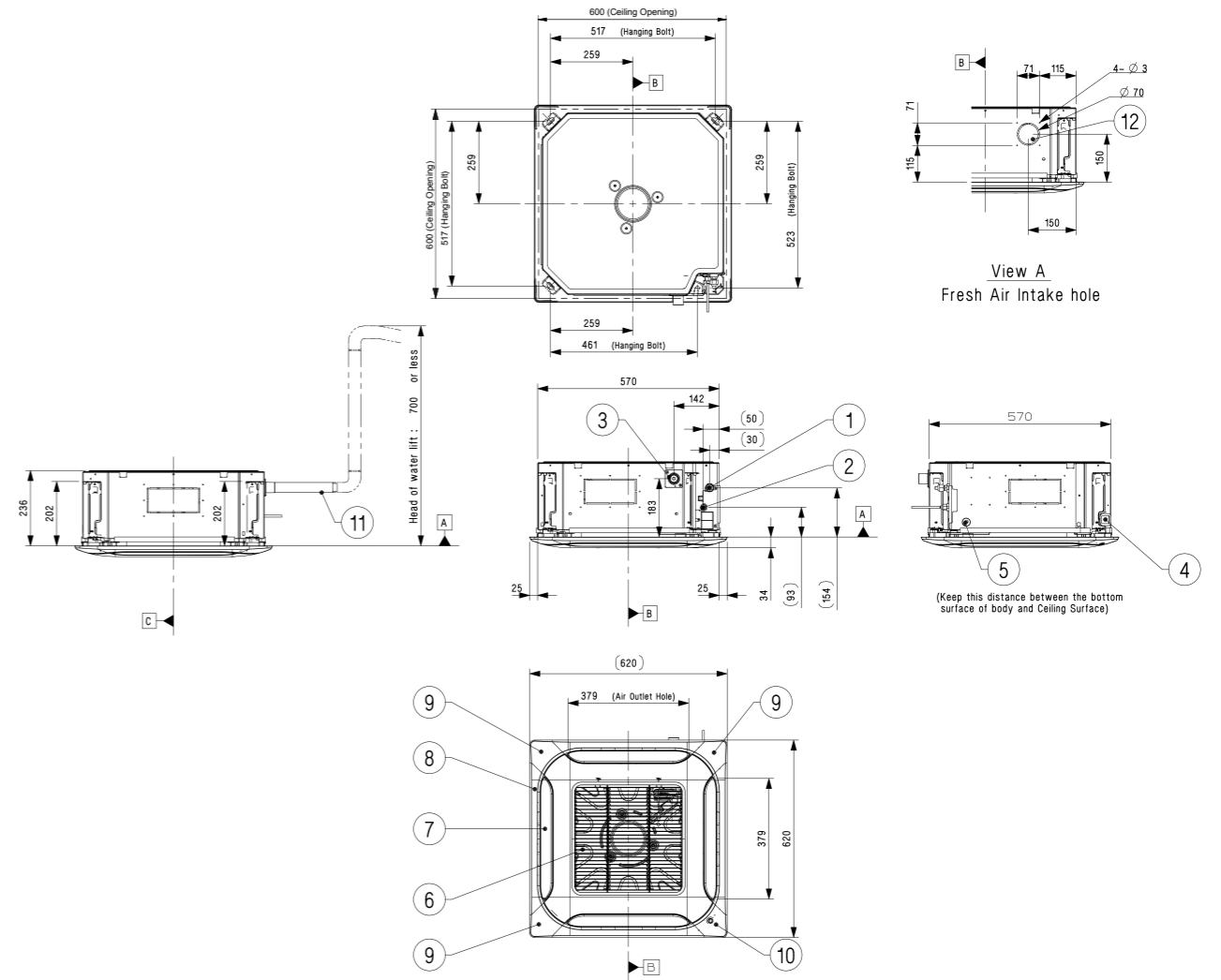


STANDARD INVERTER (R32)

CT09F.NR0 / CT12F.NR0

(Unit : mm)

	PART NAME
1	Gas Pipe Connection
2	Liquid Pipe Connection
3	Drain Pipe Connection
4	Power and Communication Cable Routing Hole
5	Wired Remote Controller Wire Routing Hole
6	Air Inlet
7	Air Outlet
8	Decoration Panel (Accessory)
9	Decoration Corner Cover
10	Decoration Corner Display Cover
11	Flexible Drain Hose
12	Fresh air Intake Hole

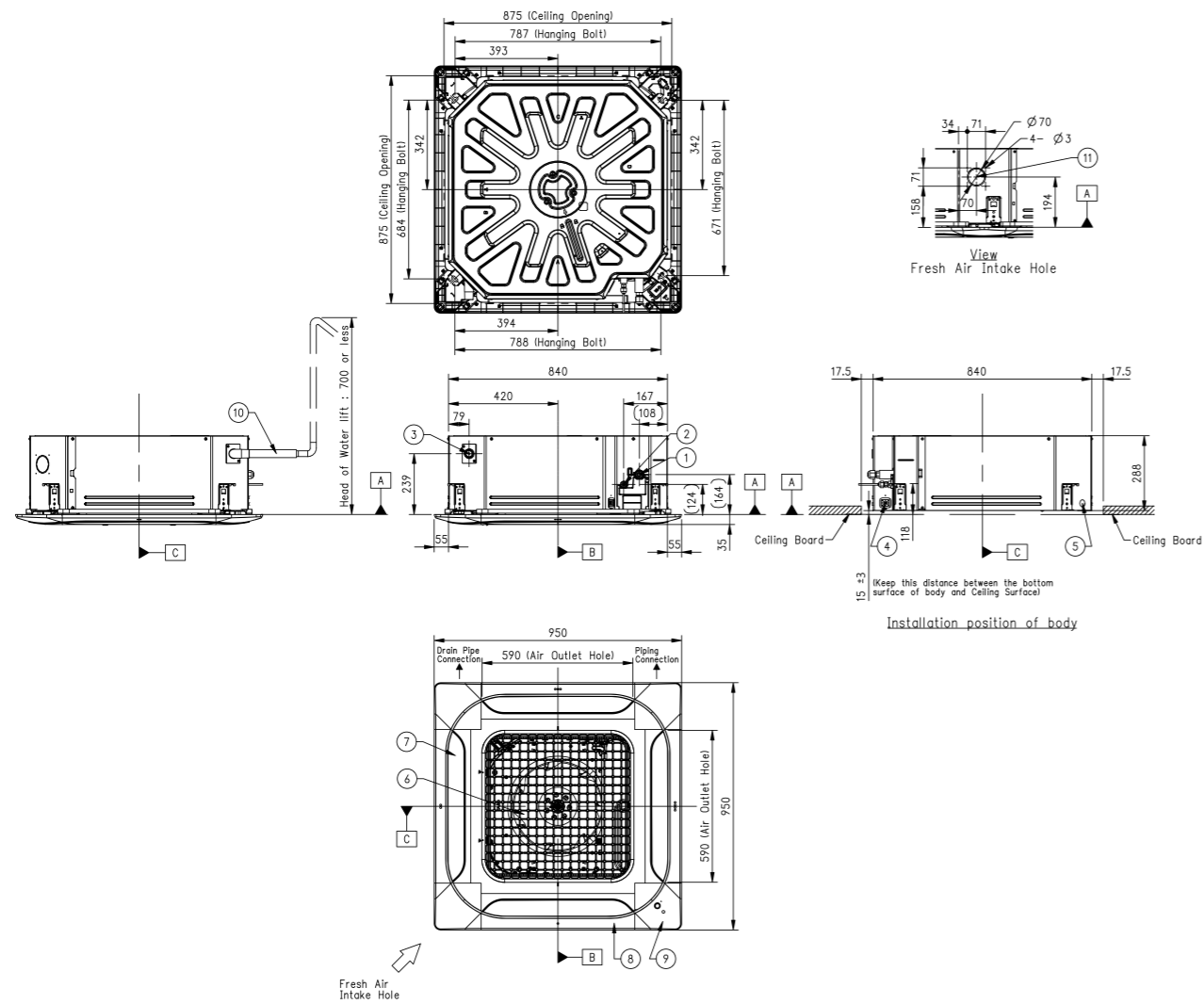


STANDARD / COMPACT INVERTER (R32)

UT36F.NA0

(Unit : mm)

PART NAME	
1	Gas Pipe Connection
2	Liquid Pipe Connection
3	Drain Pipe Connection
4	Power and Communication Cable Routing Hole
5	Wired Remote Controller Wire Routing Hole
6	Air Inlet
7	Air Outlet
8	Decoration Panel (Accessory)
9	Decoration Corner Cover
10	Flexible Drain Hose
11	Fresh Air Intake Hole

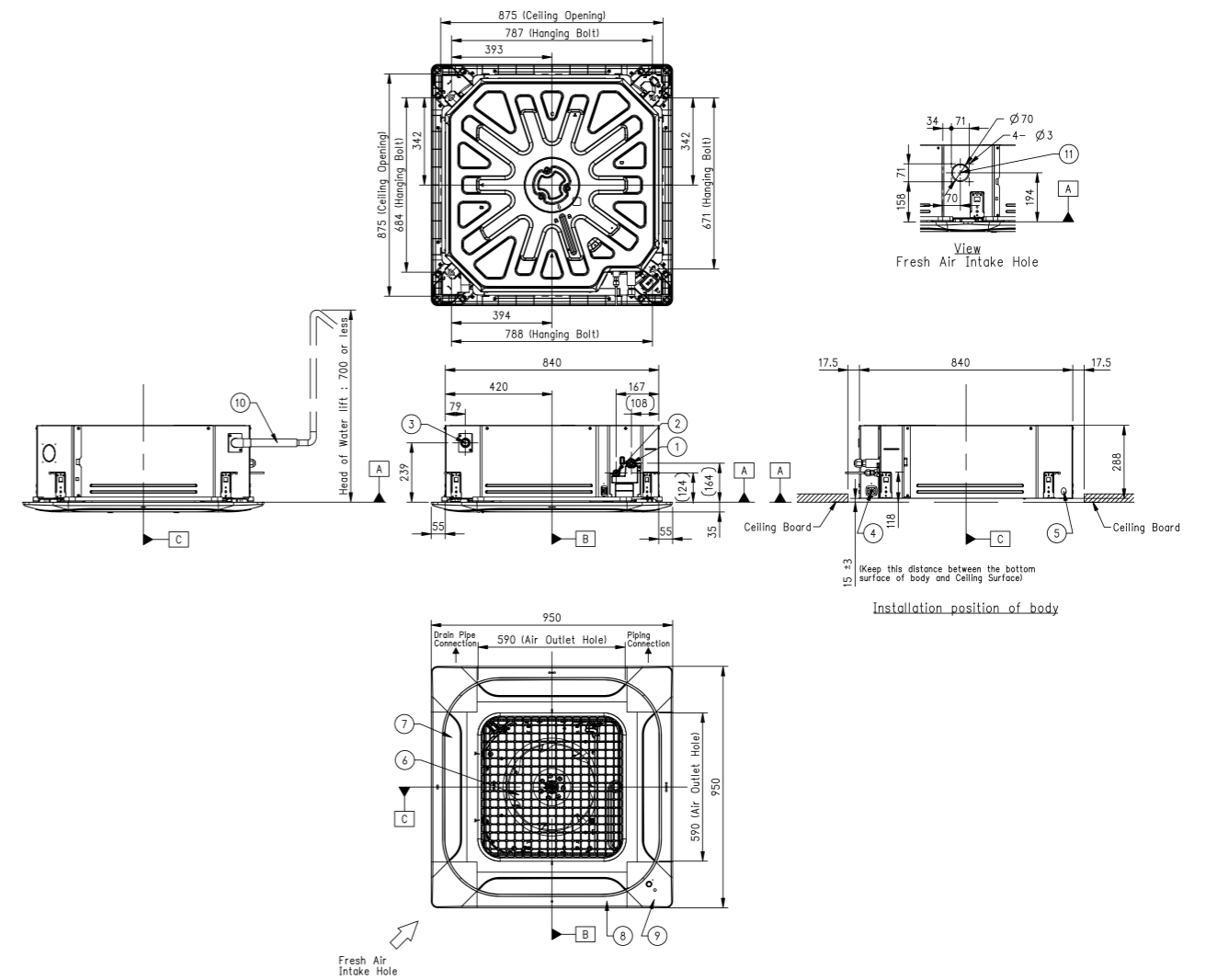


STANDARD INVERTER (R32)

UT42F.NA0 / UT48F.NA0 / UT60F.NA0

(Unit : mm)

PART NAME	
1	Gas Pipe Connection
2	Liquid Pipe Connection
3	Drain Pipe Connection
4	Power and Communication Cable Routing Hole
5	Wired Remote Controller Wire Routing Hole
6	Air Inlet
7	Air Outlet
8	Decoration Panel (Accessory)
9	Decoration Corner Cover
10	Flexible Drain Hose
11	Fresh Air Intake Hole

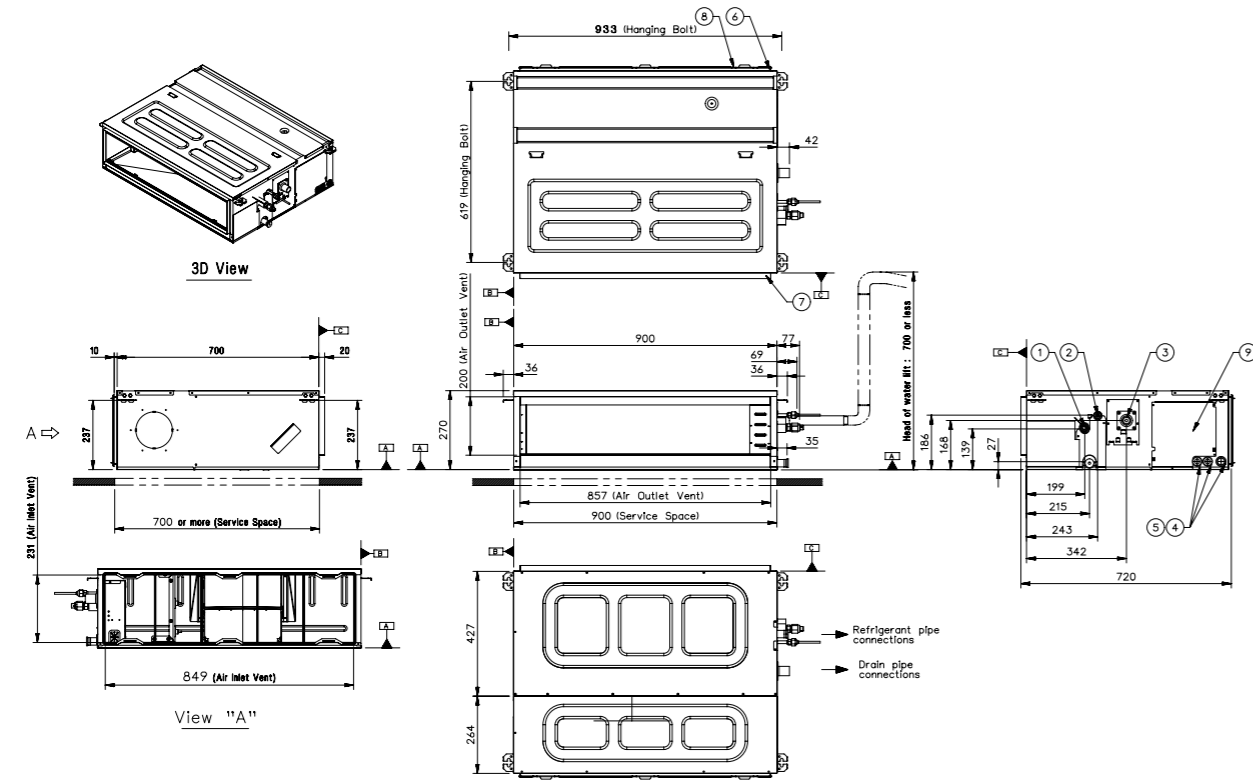


H-INVERTER (R32) / MID STATIC

UM12FH.N10 / UM18FH.N10

(Unit : mm)

PART NAME
1 Gas Pipe Connection
2 Liquid Pipe Connection
3 Drain Pipe Connection
4 Power and Communication Cable Routing Hole
5 Remote Controller Cable Hole
6 Air Inlet
7 Air Outlet
8 Air Filters
9 Control Cover

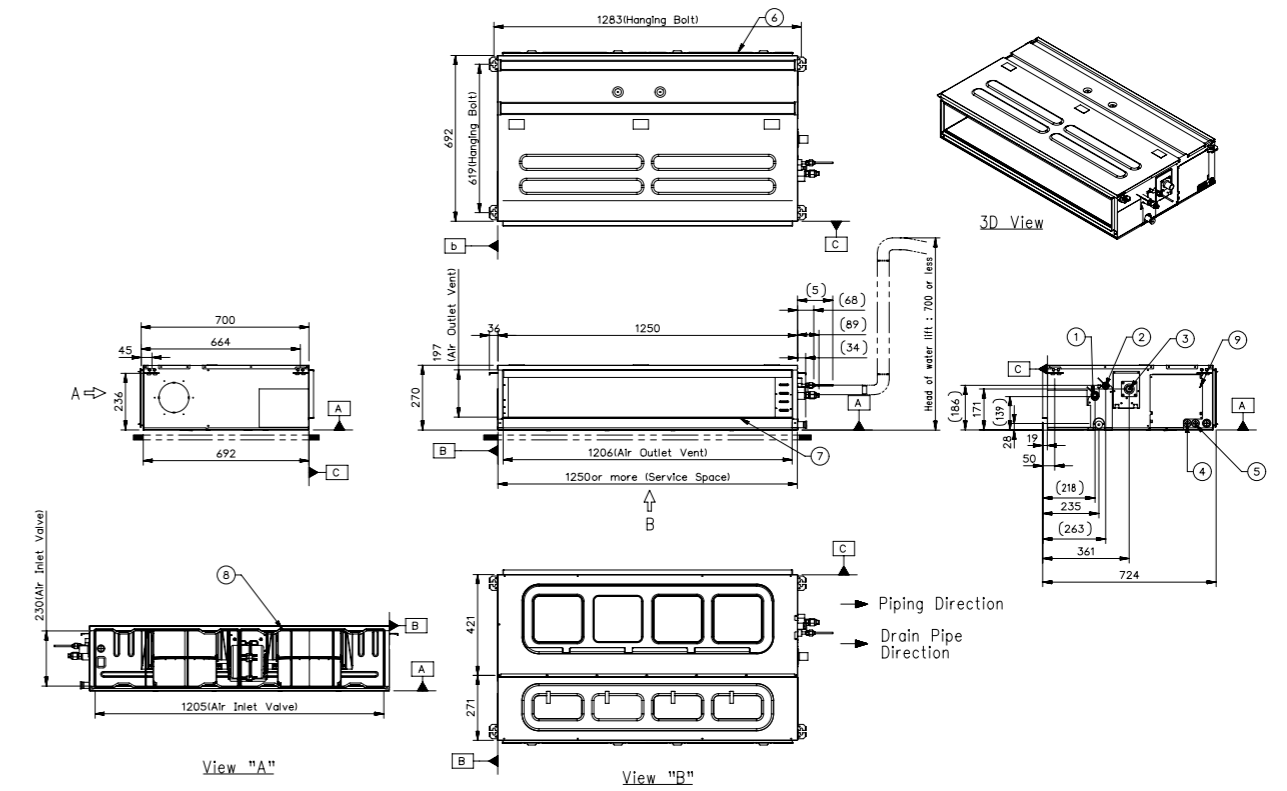


H-INVERTER (R32) / MID STATIC

UM24FH.N20 / UM30FH.N20

(Unit : mm)

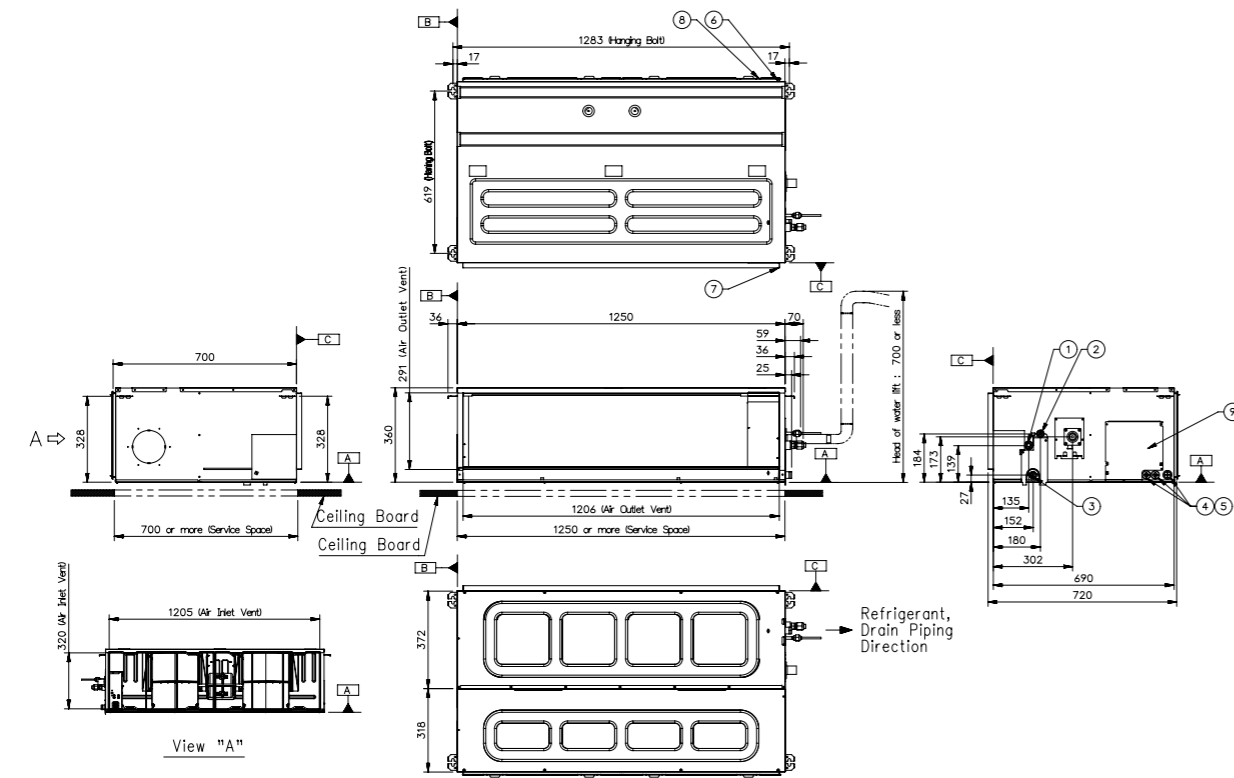
PART NAME
1 Gas Pipe Connection
2 Liquid Pipe Connection
3 Drain Pipe Connection
4 Power and Communication Cable Routing Hole
5 Remote Controller Cable Hole
6 Air Inlet
7 Air Outlet
8 Air Filters
9 Control Cover



H-INVERTER (R32) / MID STATIC
UM36FH.N30 / UM42FH.N30 / UM48FH.N30

(Unit : mm)

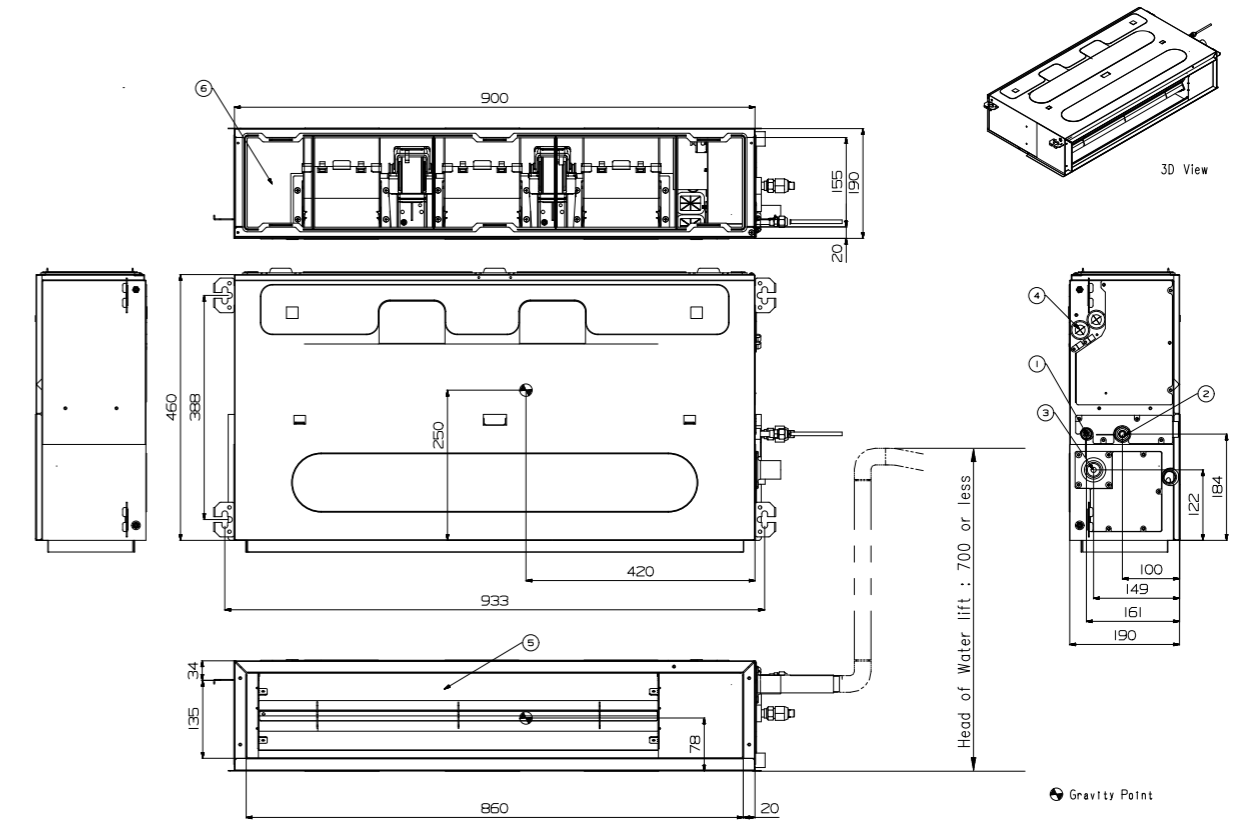
PART NAME
1 Gas Pipe Connection
2 Liquid Pipe Connection
3 Drain Pipe Connection
4 Power and Communication Cable Routing Hole
5 Remote Controller Cable Hole
6 Air Inlet
7 Air Outlet
8 Air Filters
9 Control Cover



H-INVERTER (R32) / LOW STATIC
UL12FH.N50

(Unit : mm)

PART NAME
1 Liquid Pipe Connection
2 Gas Pipe Connection
3 Drain Pipe Connection
4 Power supply Connection
5 Air Discharge
6 Air Suction

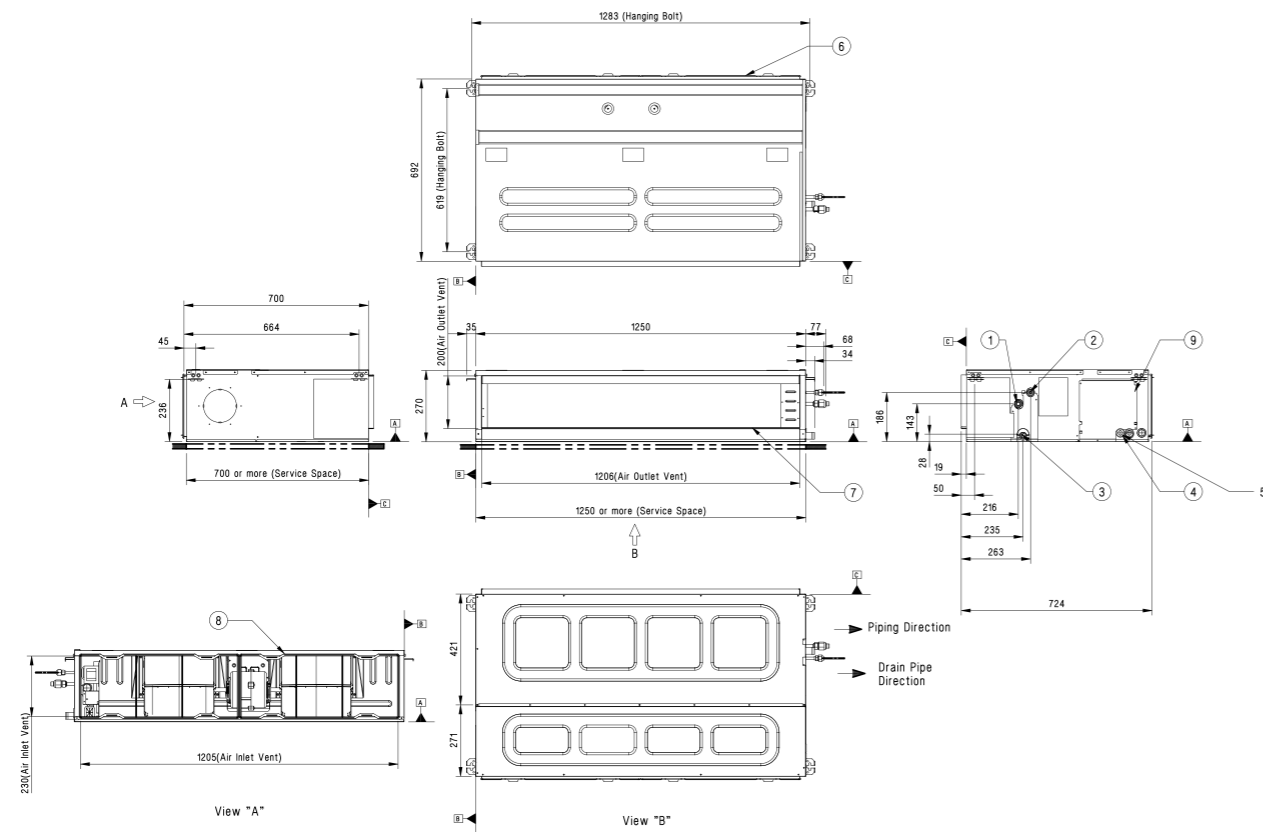


STANDARD INVERTER (R32) / MID STATIC

UM42F.N20

(Unit : mm)

	PART NAME
1	Gas Pipe Connection
2	Liquid Pipe Connection
3	Drain Pipe Connection
4	Power and Communication Cable Hole
5	Remote Controller Cable Hole
6	Air Inlet
7	Air Outlet
8	Air Filters
9	Control Cover

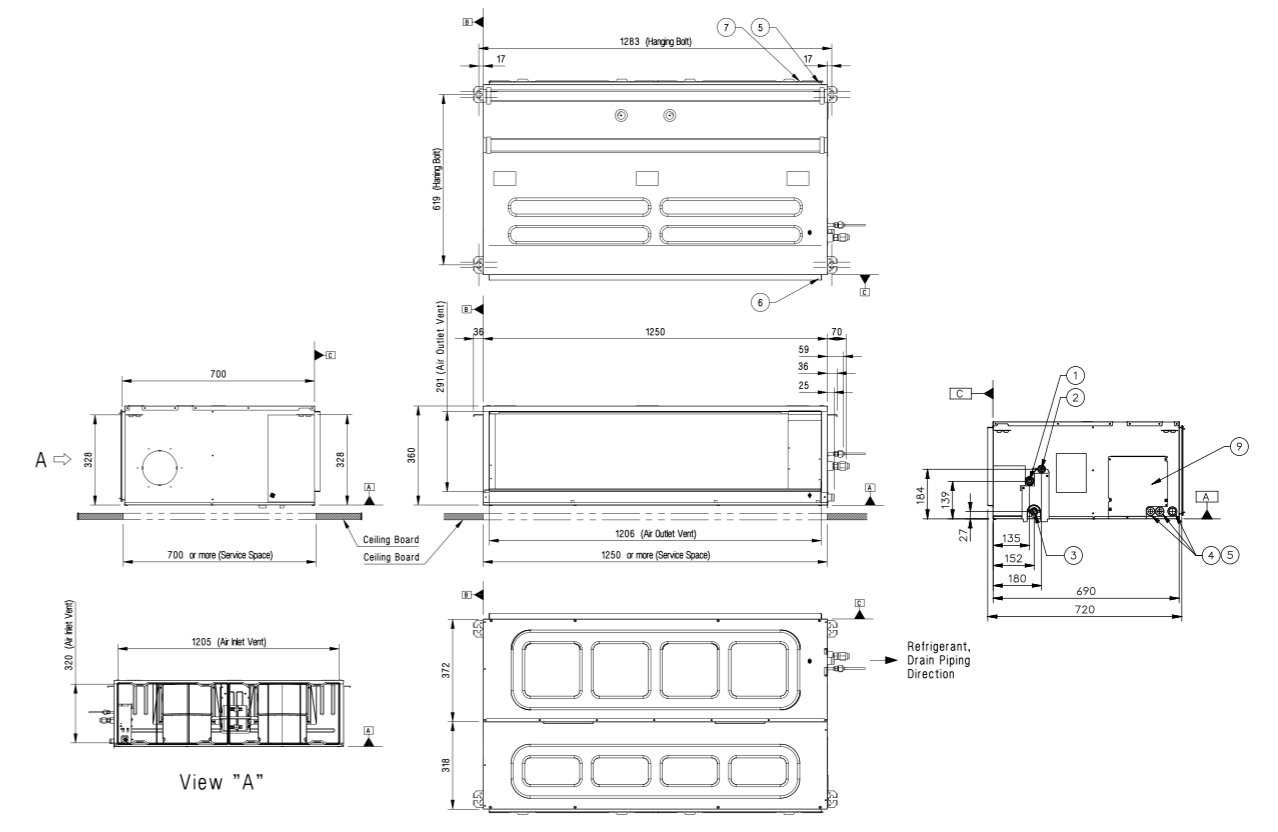


STANDARD INVERTER (R32) / MID STATIC

UM48F.N30 / UM60F.N30

(Unit : mm)

	PART NAME
1	Gas Pipe Connection
2	Liquid Pipe Connection
3	Drain Pipe Connection
4	Power and Communication Cable Hole
5	Remote Controller Cable Hole
6	Air Inlet
7	Air Outlet
8	Air Filters
9	Control Cover

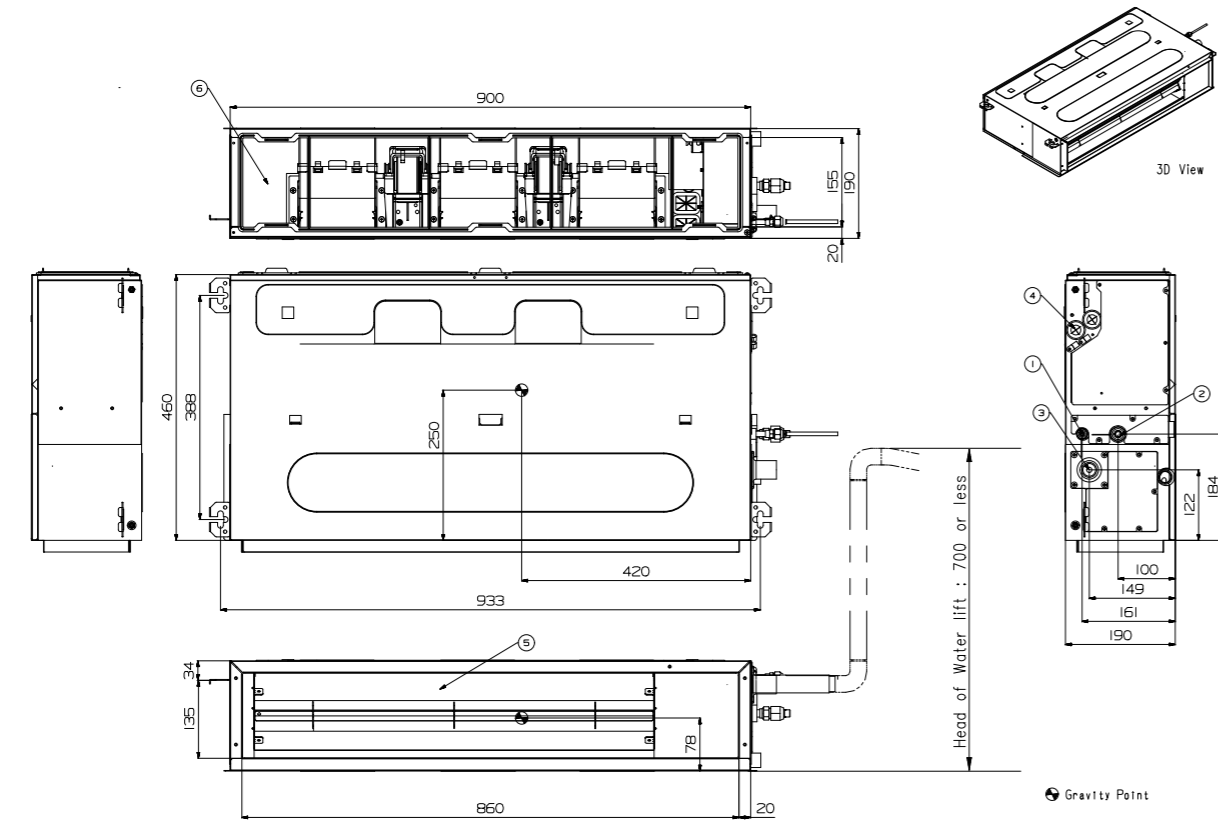


STANDARD INVERTER (R32) / LOW STATIC

CL09F.N50 / CL12F.N50

(Unit : mm)

	PART NAME
1	Liquid Pipe Connection
2	Gas Pipe Connection
3	Drain Pipe Connection
4	Power Supply Connection
5	Air Discharge
6	Air Suction

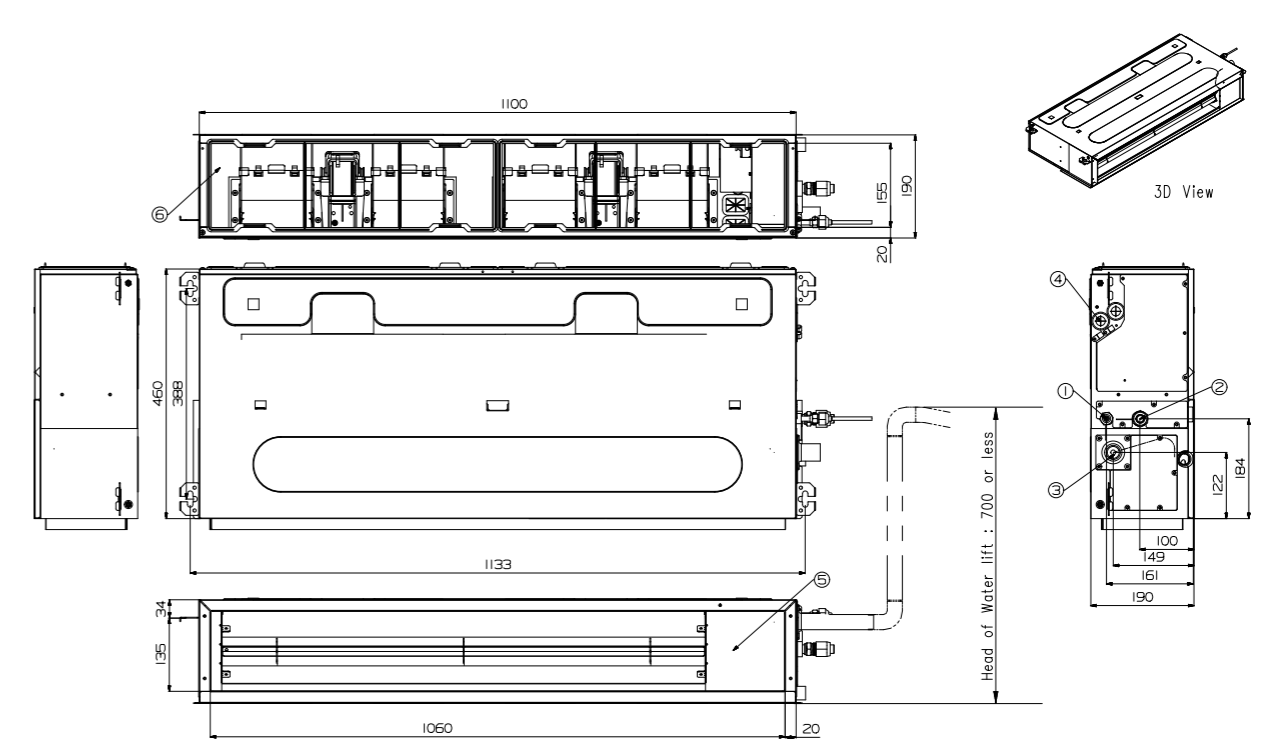


STANDARD / COMPACT INVERTER (R32) / LOW STATIC

CL18F.N60

(Unit : mm)

	PART NAME
1	Liquid Pipe Connection
2	Gas Pipe Connection
3	Drain Pipe Connection
4	Power Supply Connection
5	Air Discharge
6	Air Suction

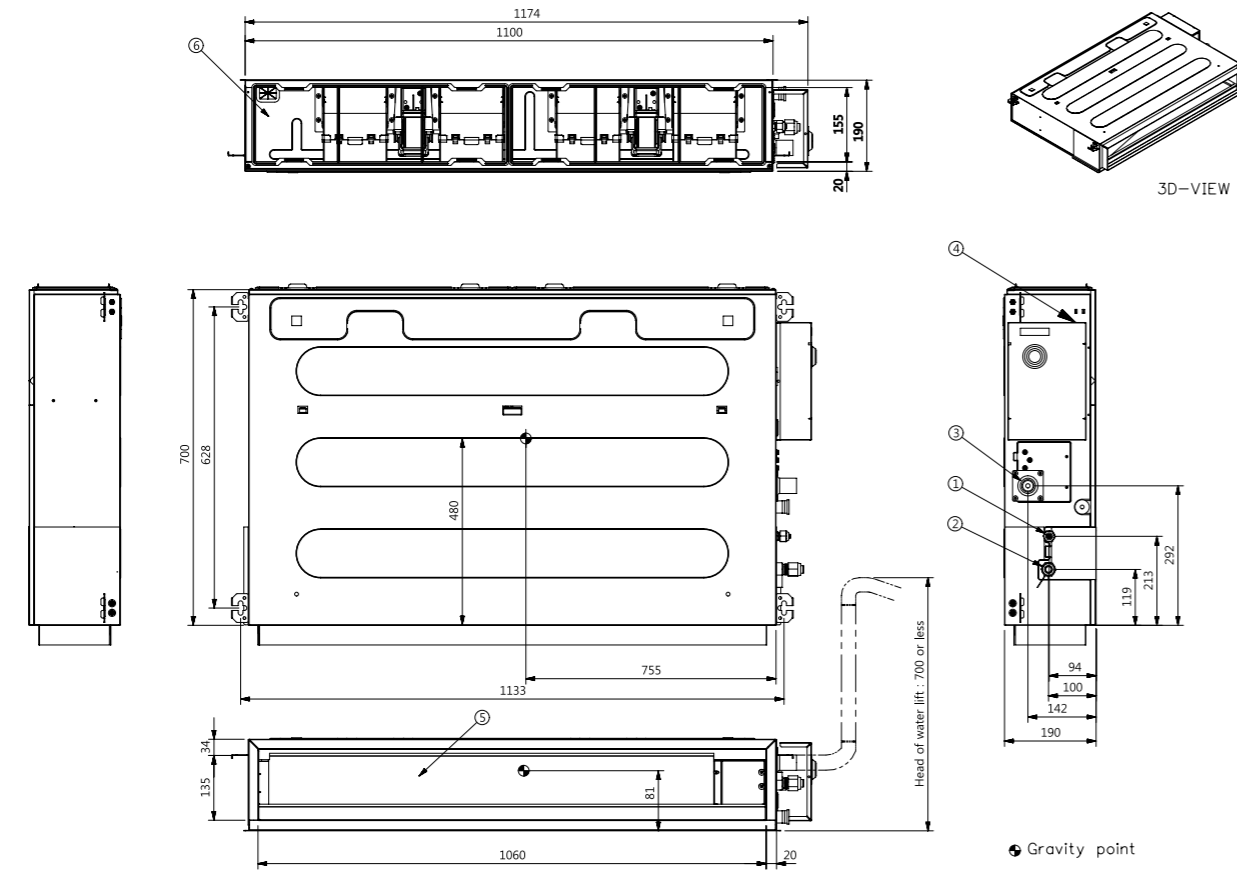


STANDARD / COMPACT INVERTER (R32) / LOW STATIC

CL24F.N30

(Unit : mm)

	PART NAME
1	Liquid Pipe Connection
2	Gas Pipe Connection
3	Drain Pipe Connection
4	Power Supply Connection
5	Air Discharge
6	Air Suction

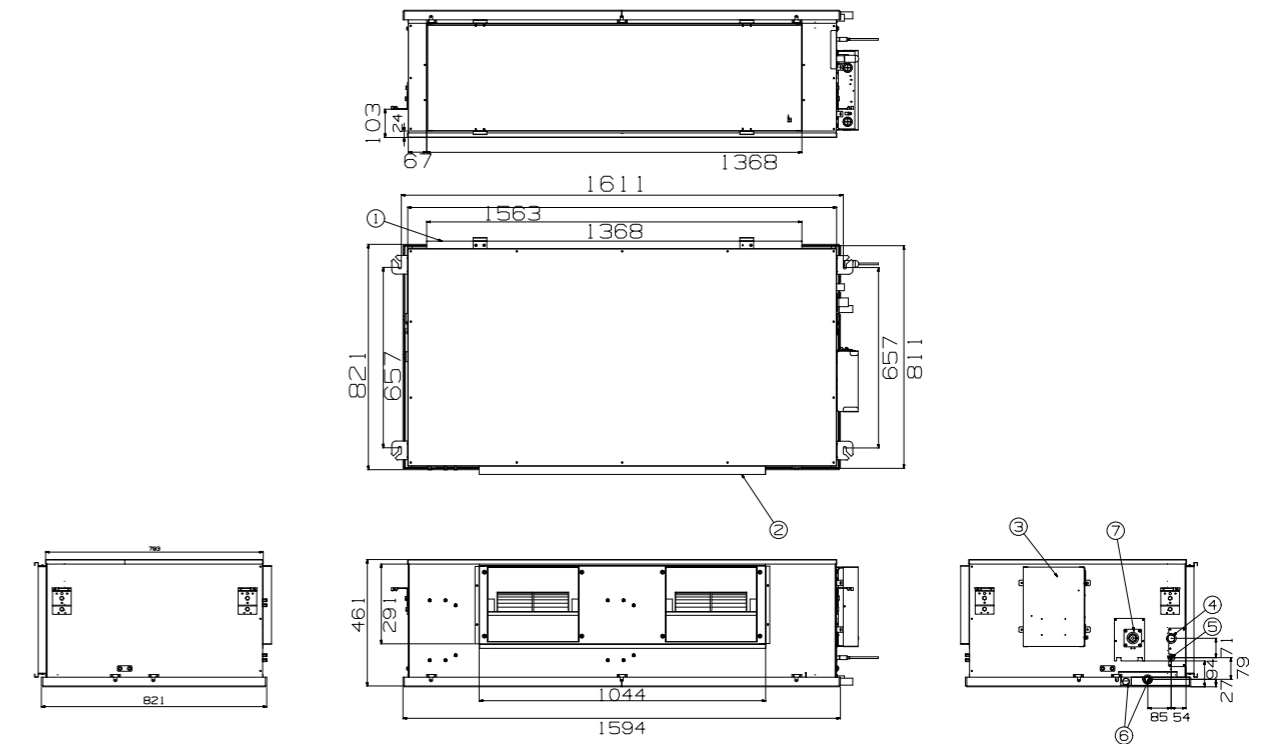


STANDARD INVERTER (R410A) / HIGH STATIC

UB70.N95 / UB85.N95

(Unit : mm)

	PART NAME
1	Air Suction Flange
2	Air Discharge Flange
3	Control Box
4	Gas Piping Connection
5	Liquid Pipe Connection
6	Drain Pipe Connection
7	Drain Pump (Option)

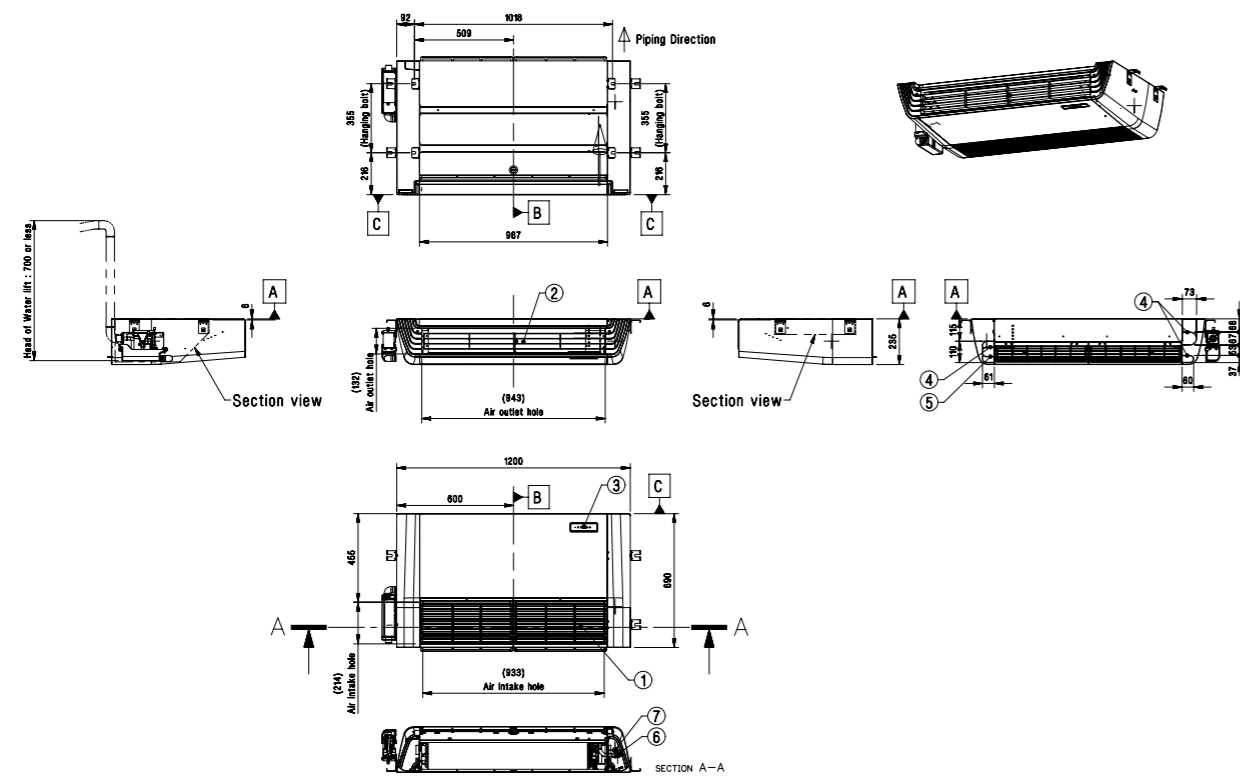


H-INVERTER (R32)

UV18FH.N10

(Unit : mm)

	PART NAME
1	Air Inlet
2	Air Outlet
3	Remote Controller Signal Receiver
4	Drain Hose Routing Hole
5	Refrigerant Pipe and Routing Hole
6	Gas Pipe Connection
7	Liquid Pipe Connection

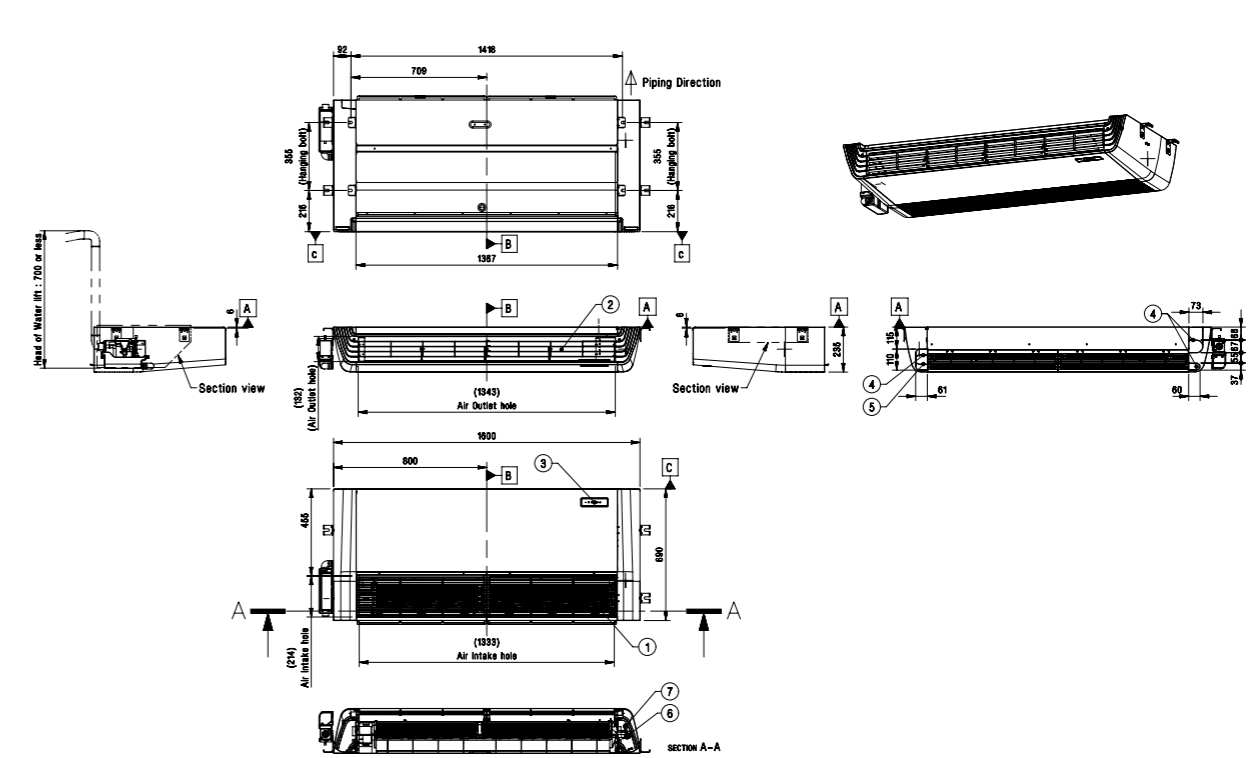


H-INVERTER (R32)

UV24FH.N20 / UV30FH.N20 / UV36FH.N20 / UV42FH.N20

(Unit : mm)

	PART NAME
1	Air Inlet
2	Air Outlet
3	Remote Controller Signal Receiver
4	Drain Hose Routing Hole
5	Refrigerant Pipe and Routing Hole
6	Gas Pipe Connection
7	Liquid Pipe Connection

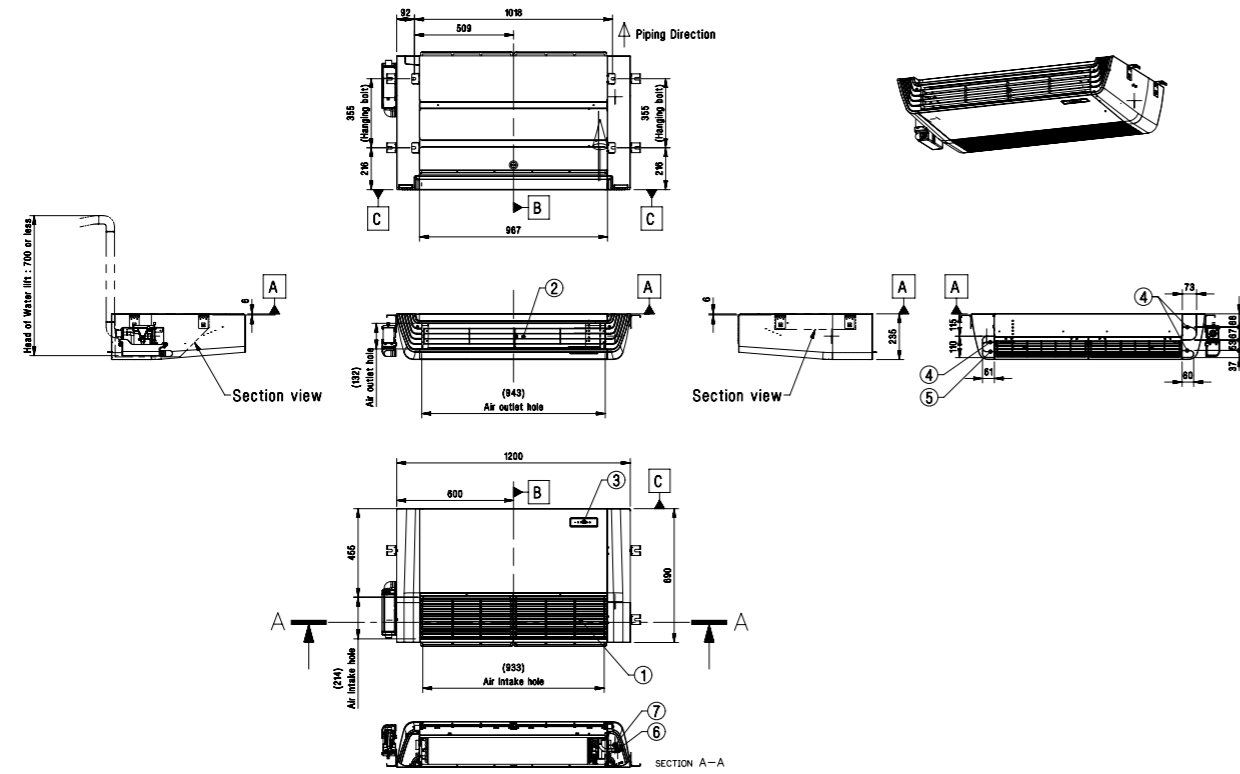


STANDARD / COMPACT INVERTER (R32)

UV18F.N10 / UV24F.N10 / UV30F.N10

(Unit : mm)

PART NAME	
1	Air Inlet
2	Air Outlet
3	Remote Controller Signal Receiver
4	Drain Hose Routing Hole
5	Refrigerant Pipe and Routing Hole
6	Gas Pipe Connection
7	Liquid Pipe Connection

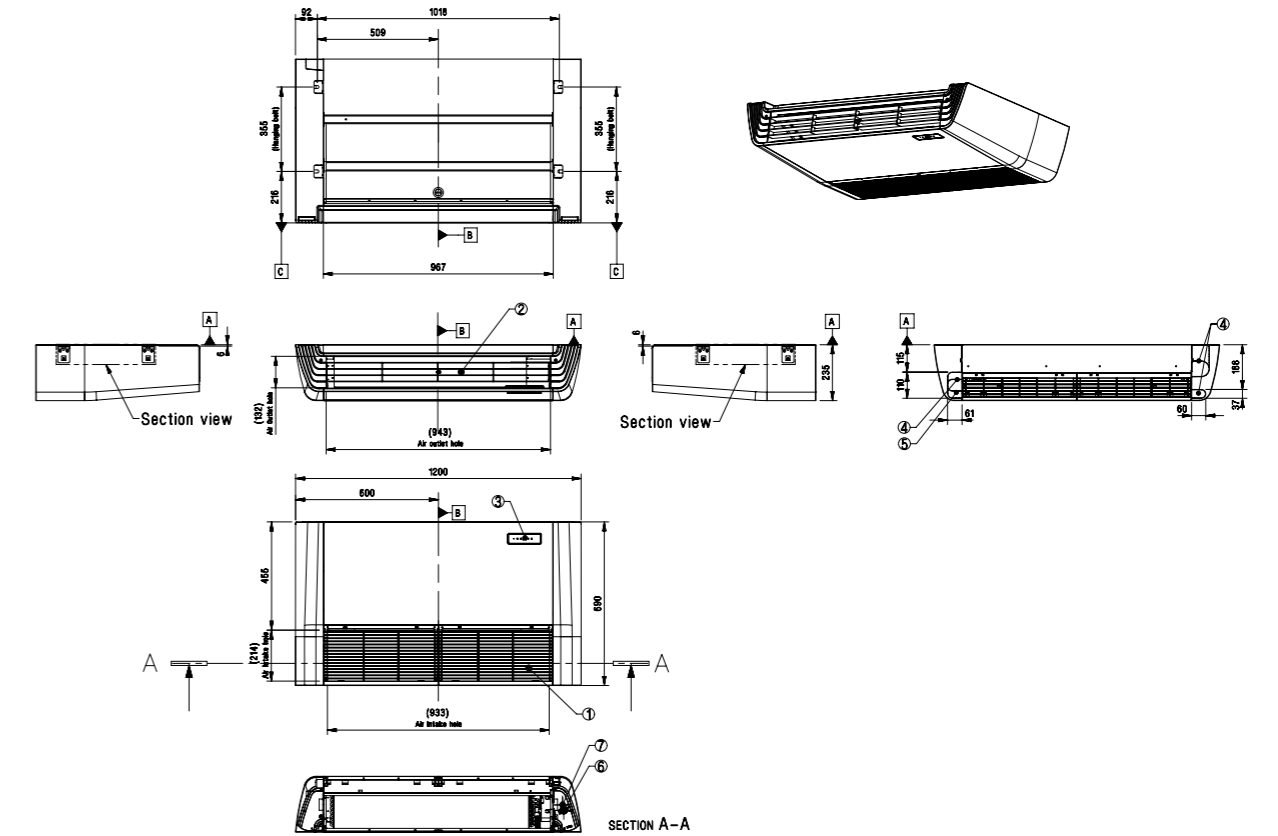


STANDARD INVERTER (R32)

UV36F.N20 / UV42F.N20 / UV48F.N20 / UV60F.N20

(Unit : mm)

PART NAME	
1	Air Inlet
2	Air Outlet
3	Remote Controller Signal Receiver
4	Drain Hose Routing Hole
5	Refrigerant Pipe and Routing Hole
6	Gas Pipe Connection
7	Liquid Pipe Connection

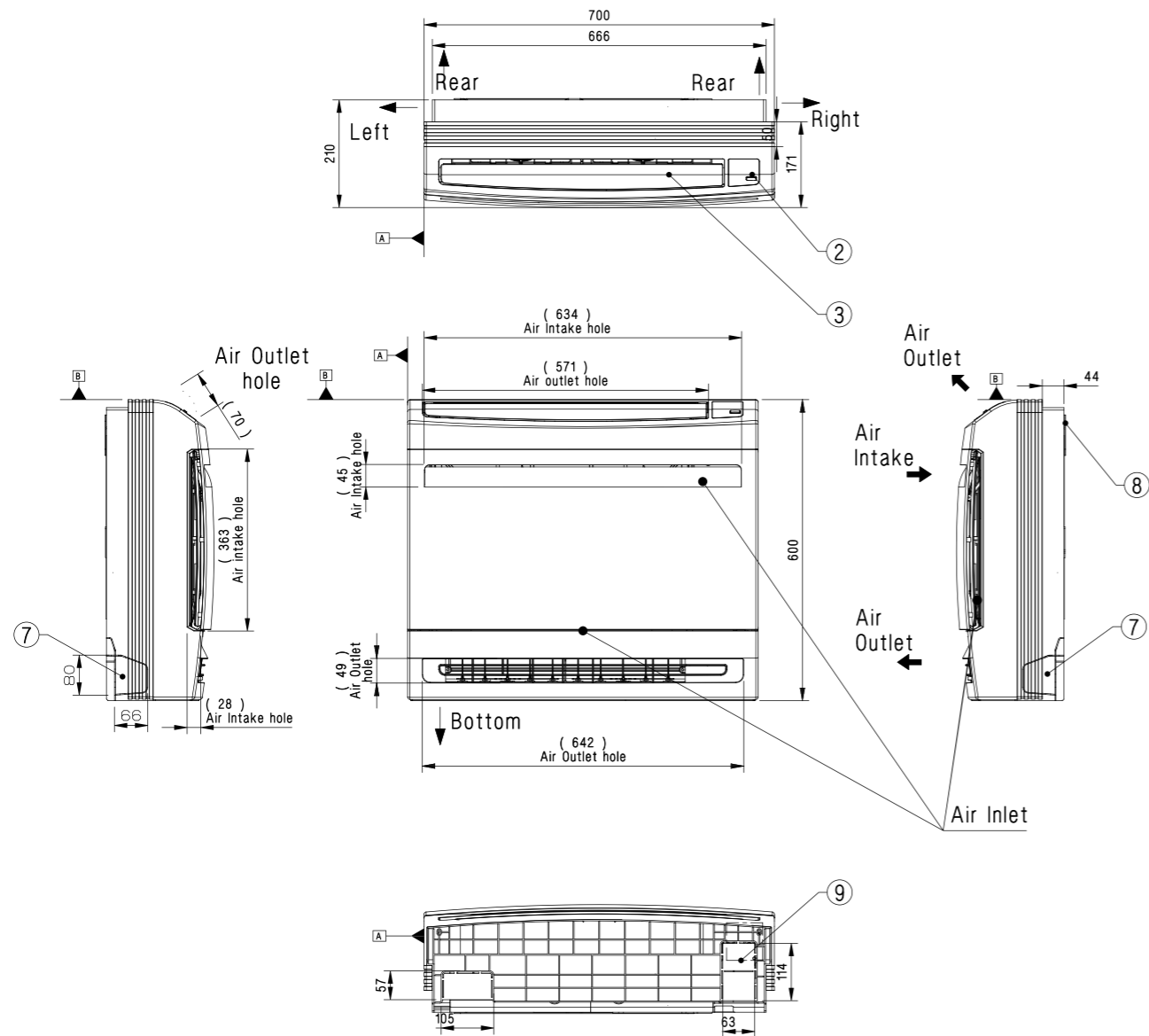


STANDARD INVERTER (R32)

UQ09.NA0 / UQ12.NA0 / UQ18.NA0

(Unit : mm)

PART NAME
1 Air Suction Grille
2 Remote Controller Signal Receiver
3 Air Discharge Grille
4 Gas Pipe Connection
5 Liquid Pipe Connection
6 Drain Hose Connection
7 Refrigerant / Drain Pipe & Cable Routing Hole
8 Installation Plate
9 Terminal Block for Power Supply & Communication

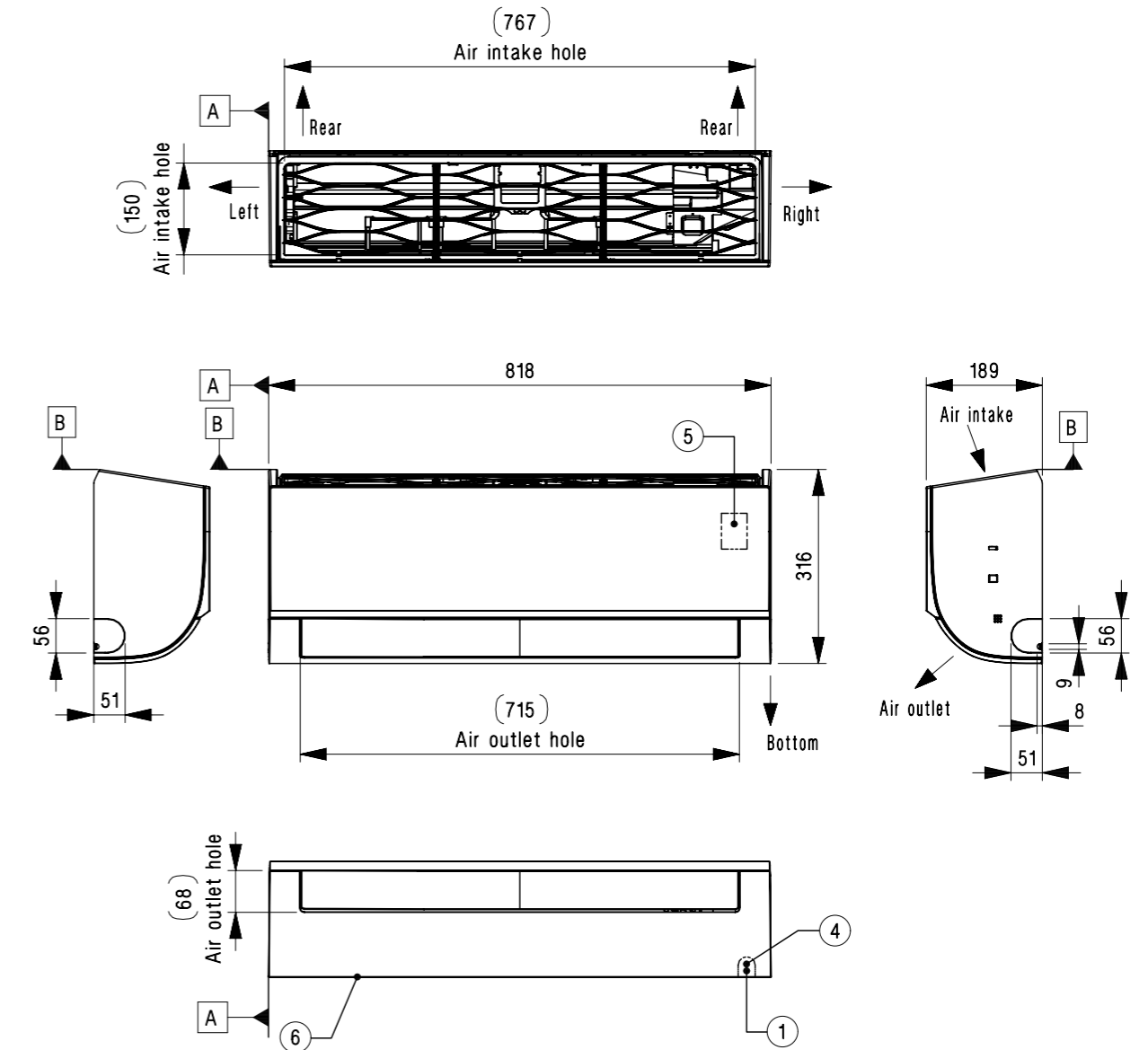


STANDARD INVERTER (R32)

MJ09PC.NSJ / MJ12PC.NSJ

(Unit : mm)

PART NAME
1 Refrigerant / Drain Pipe and Cable Routing Hole
2 Installation Plate
3 Drain Hose Connection
4 Terminal Block for Power Supply Communication
5 Display & Remote Controller Signal Receiver
6 Decoration Cover

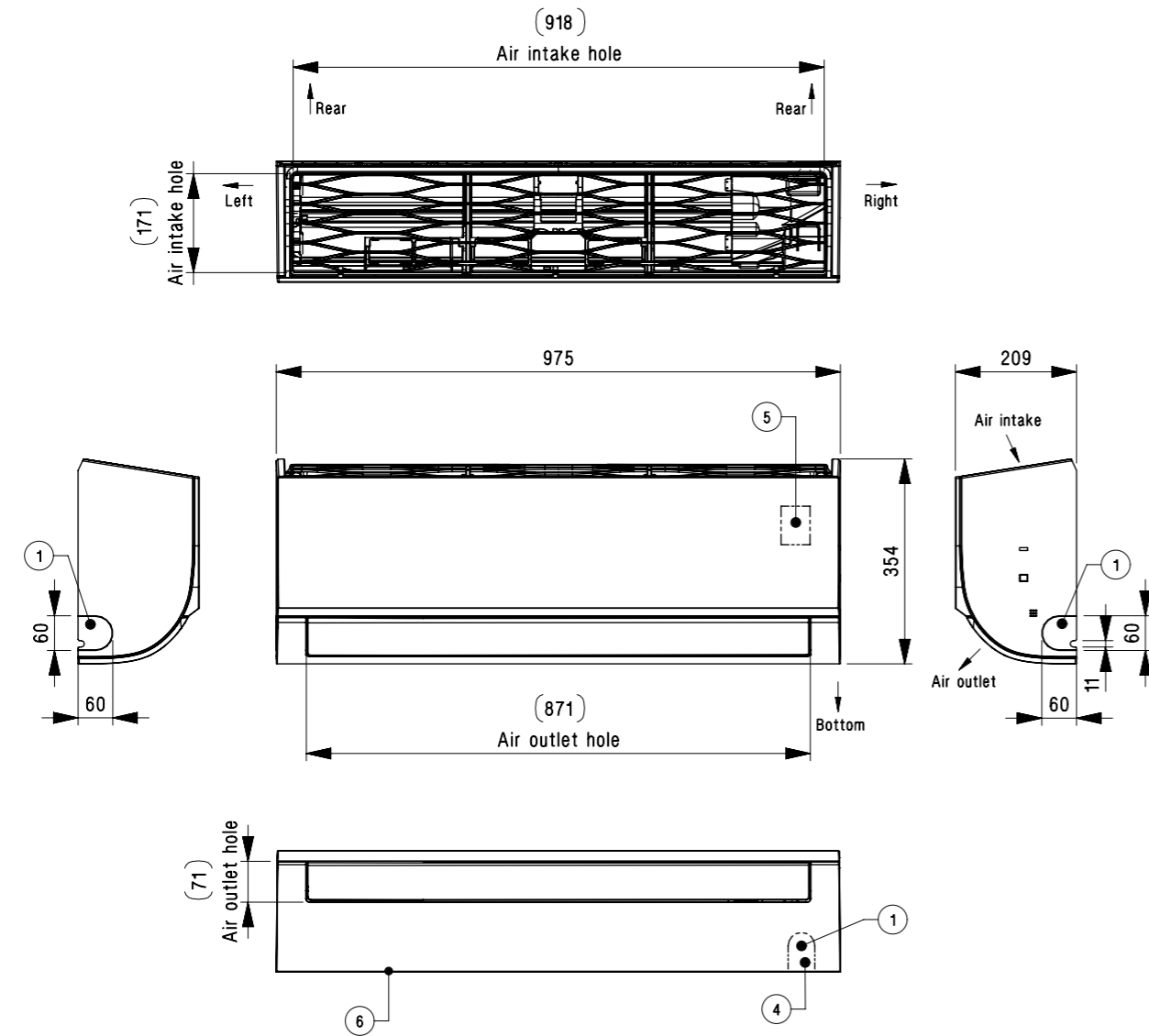


STANDARD INVERTER (R32)

MJ18PC.NSJ / MJ24PC.NSJ

(Unit : mm)

	PART NAME
1	Refrigerant / Drain Pipe and Cable Routing Hole
2	Installation Plate
3	Drain Hose Connection
4	Terminal Block for Power Supply Communication
5	Display & Remote Controller Signal Receiver
6	Decoration Cover

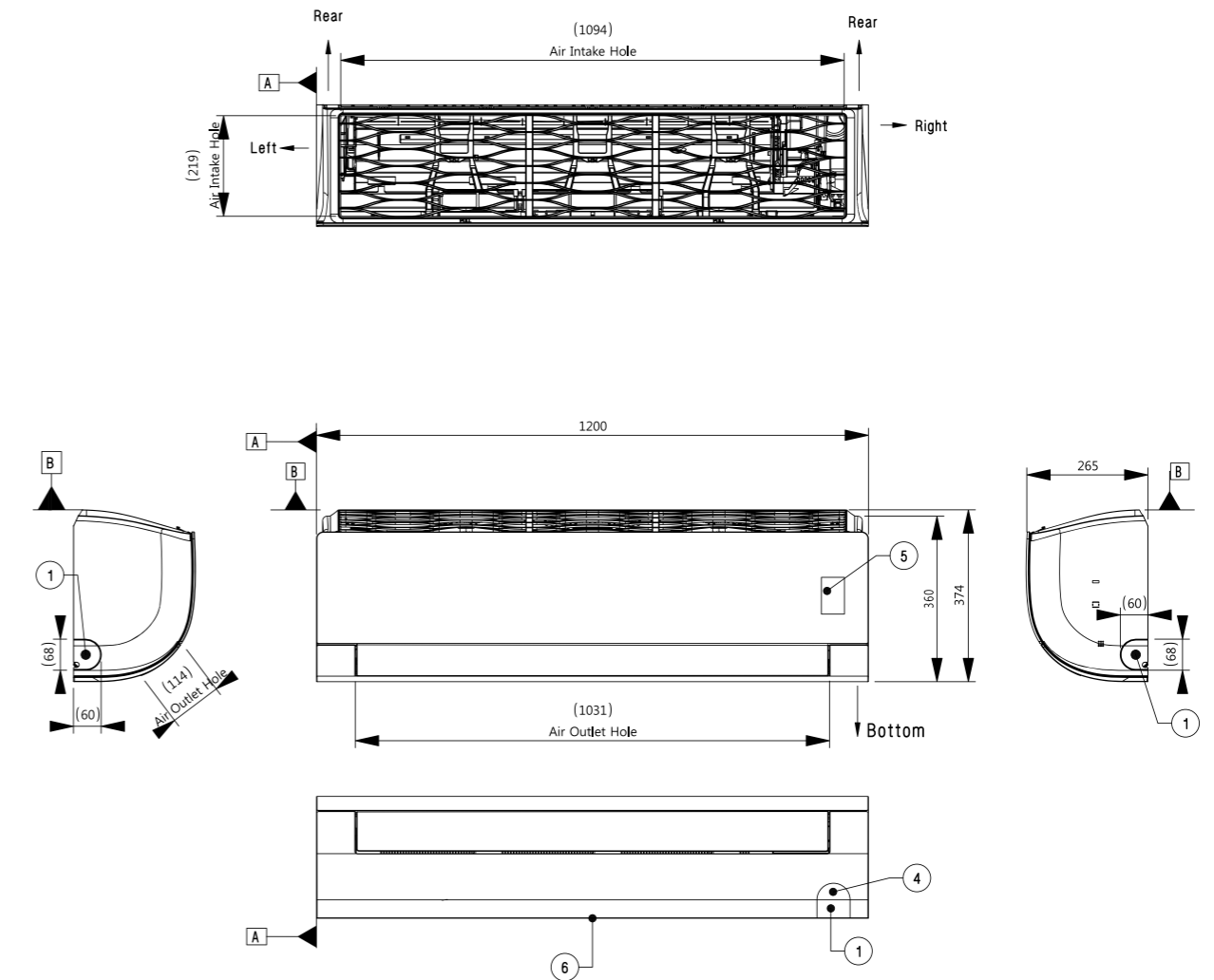


STANDARD / COMPACT INVERTER (R32)

US30F.NR0 / US36F.NR0

(Unit : mm)

	PART NAME
1	Refrigerant / Drain Pipe and Cable Routing Hole
2	Installation Plate
3	Drain Hose Connection
4	Terminal Block for Power Supply Communication
5	Display & Remote Controller Signal Receiver
6	Decoration Cover

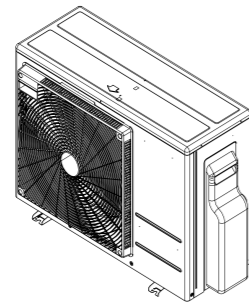


HIGH / STANDARD / COMPACT INVERTER (R32)

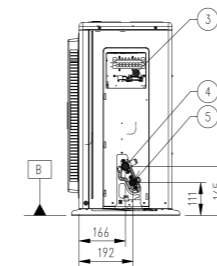
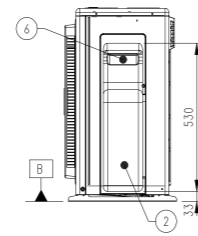
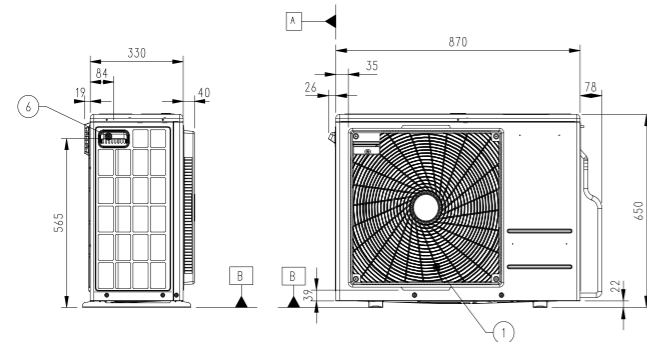
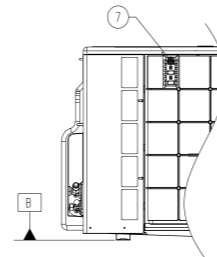
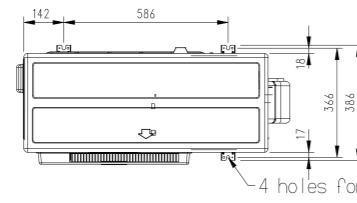
UUB1.U20

(Unit : mm)

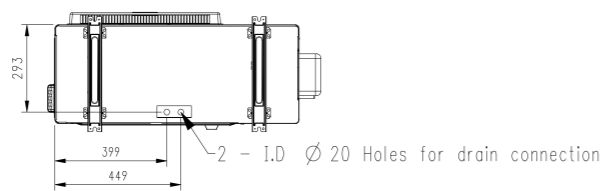
PART NAME
1 Air Outlet
2 Control Cover & SVC Valve Cover
3 Power and Communication Cable Connection
4 Gas Pipe Connection
5 Liquid Pipe Connection
6 Handle
7 Intake Air Temperature Sensor Cover



3D View



Side View
(removed valve cover)

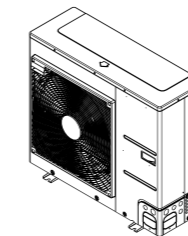


HIGH / STANDARD / COMPACT INVERTER (R32)

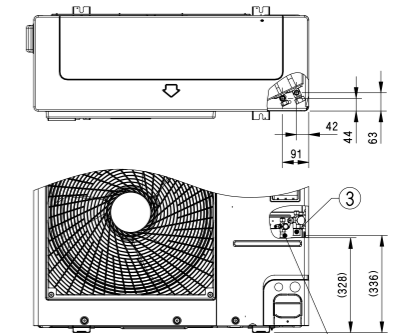
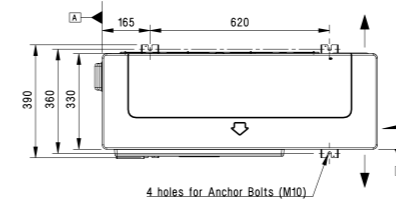
UUC1.U40

(Unit : mm)

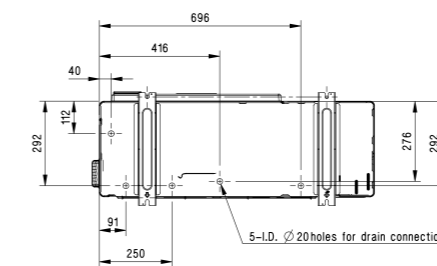
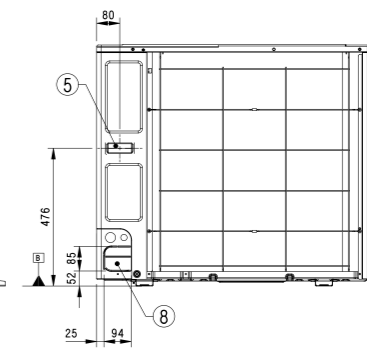
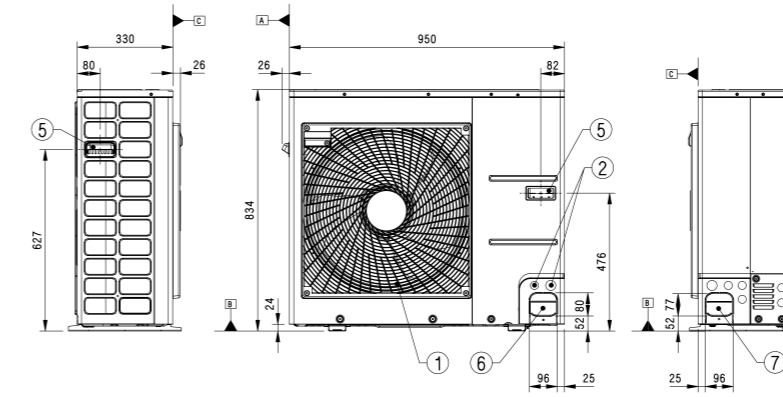
PART NAME
1 Air Outlet
2 Power and Communication Cable Hole
3 Gas Pipe Connection
4 Liquid Pipe Connection
5 Handle
6 Pipe Routing Hole (Front)
7 Pipe Routing Hole (Side)
8 Pipe Routing Hole (Back)



3D View



Piping connection port

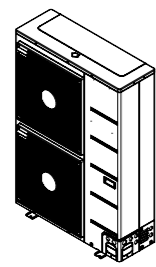


STANDARD INVERTER (R32)

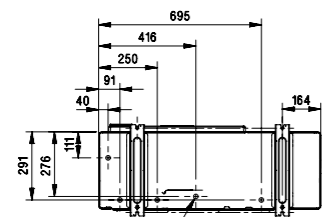
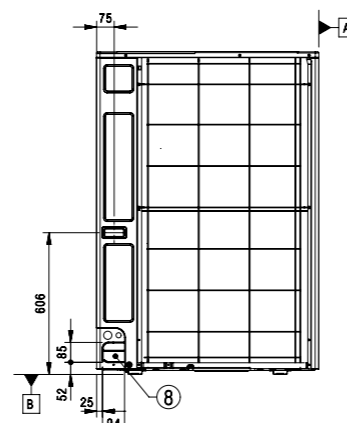
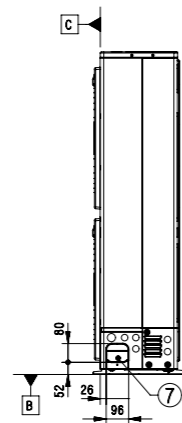
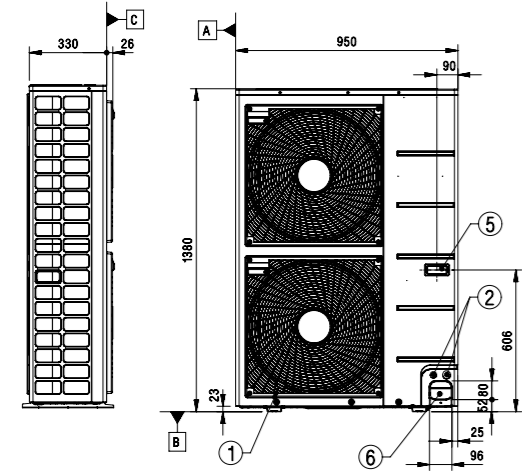
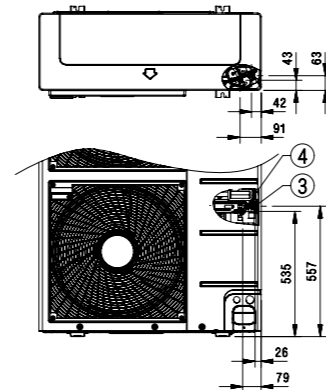
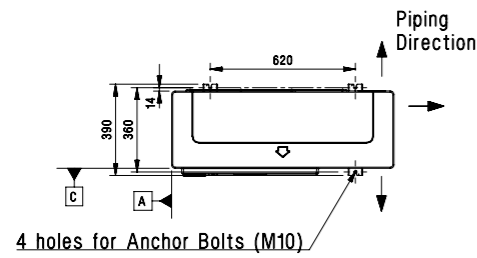
UUD1.U30 / UUD3.U30

(Unit : mm)

	PART NAME
1	Air Outlet
2	Power and Communication Cable Hole
3	Gas Pipe Connection
4	Liquid Pipe Connection
5	Handle
6	Pipe Routing Hole (Front)
7	Pipe Routing Hole (Side)
8	Pipe Routing Hole (Back)



3D View

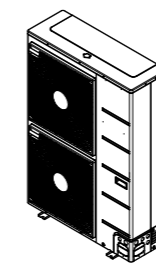


STANDARD INVERTER (R410A)

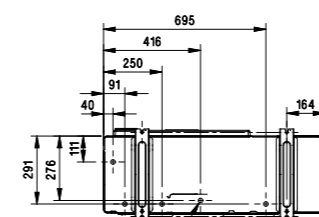
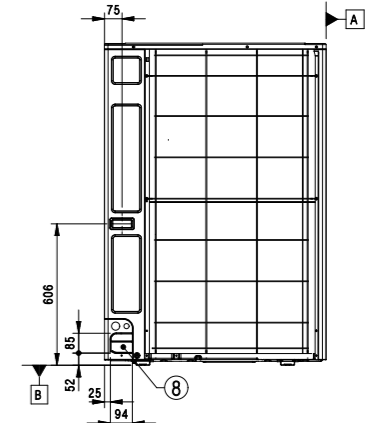
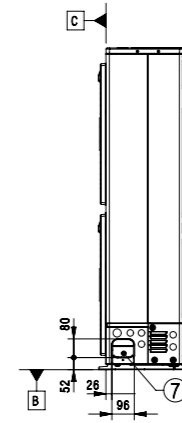
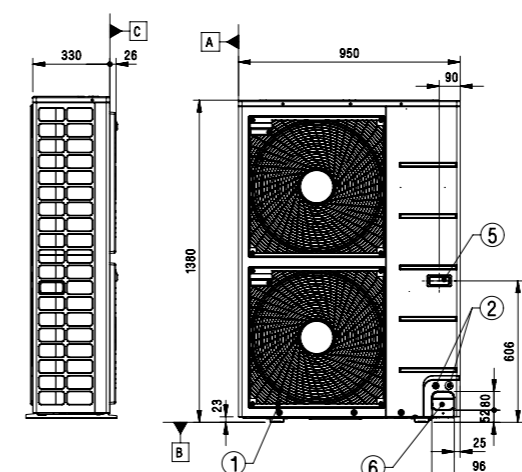
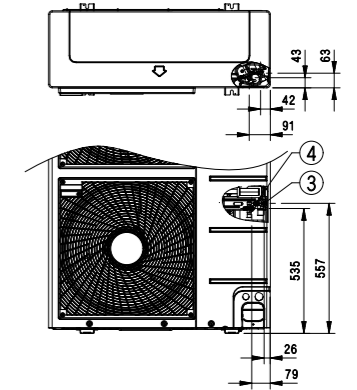
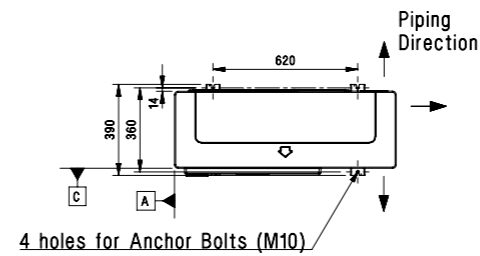
UU48W.U32 / UU49W.U32

(Unit : mm)

	PART NAME
1	Air Outlet
2	Power and Communication Cable Hole
3	Gas Pipe Connection
4	Liquid Pipe Connection
5	Handle
6	Pipe Routing Hole (Front)
7	Pipe Routing Hole (Side)
8	Pipe Routing Hole (Back)



3D View

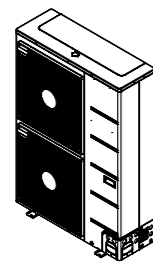


STANDARD INVERTER (R410A)

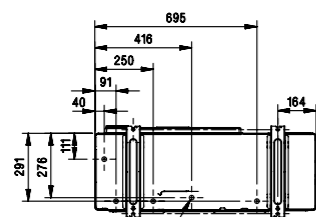
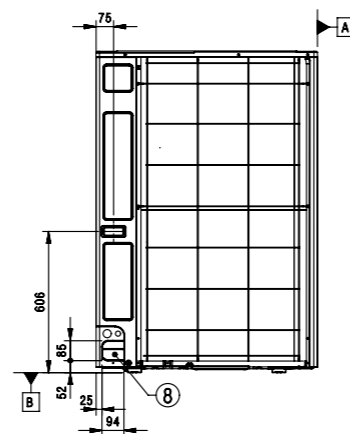
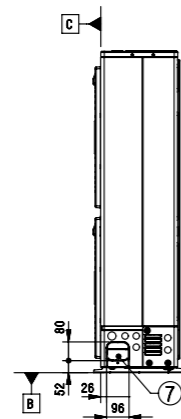
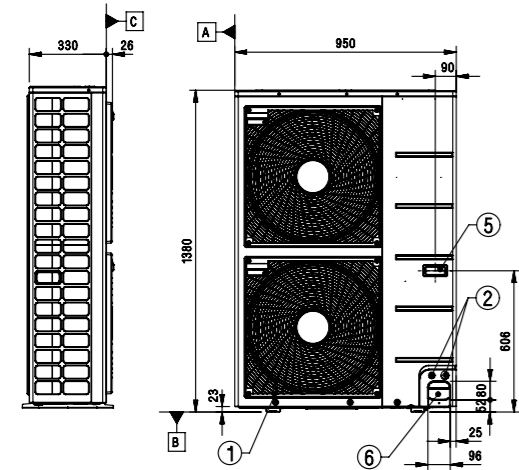
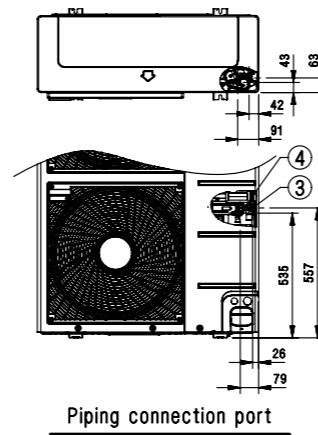
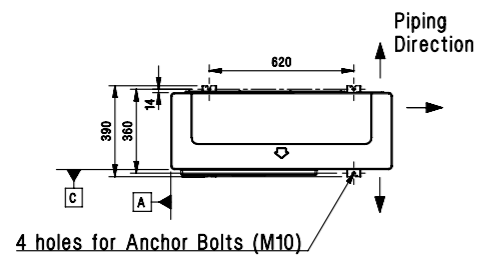
UU70W.U34

(Unit : mm)

PART NAME
1 Air Outlet
2 Power and Communication Cable Hole
3 Gas Pipe Connection
4 Liquid Pipe Connection
5 Handle
6 Pipe Routing Hole (Front)
7 Pipe Routing Hole (Side)
8 Pipe Routing Hole (Back)



3D View



5-ID. $\varnothing 20$ holes for drain connection

STANDARD INVERTER (R410A)

UU85W.U74

(Unit : mm)

PART NAME
1 Gas Piping Connection
2 Liquid Piping Connection
3 Air Inlet
4 Air Outlet
5 Drain Hole 22
6 Power and communication Cable Hole
7 Power and communication Cable Hole
8 Power and communication Cable Hole

